

Version 1.4

---

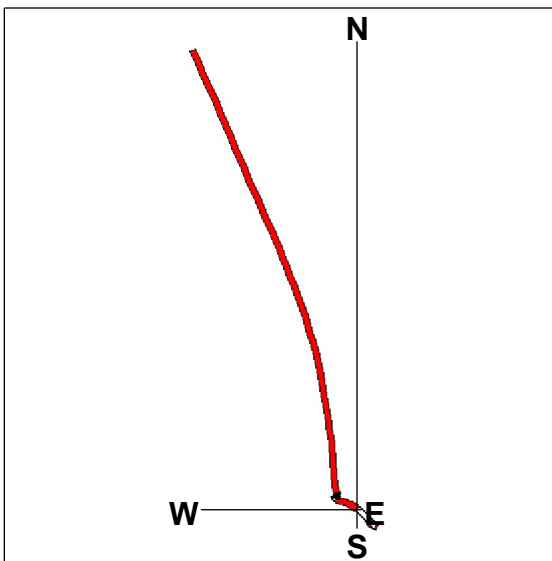
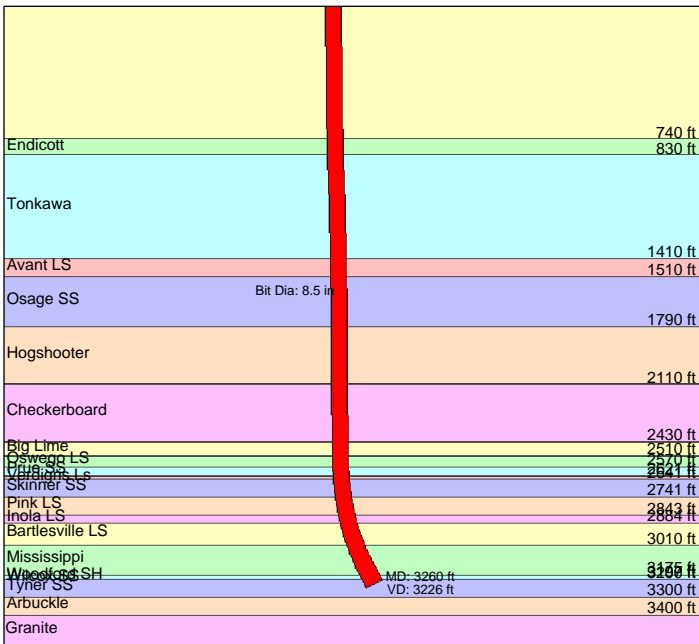
<b>Well Name</b>	<b>Lucy Pad</b>
<b>Field/Block</b>	<b>Lucy</b>
<b>County/Parish</b>	<b>Creek</b>
<b>State/Province</b>	<b>Oklahoma</b>
<b>Country</b>	<b>USA</b>
<b>Operator</b>	<b>NOV</b>
<b>Contractor</b>	<b>Catoosa</b>
<b>Spud Date</b>	<b>Oct 2014</b>
<b>TD Date</b>	<b>Oct 2014</b>
<b>Output Start Depth</b>	<b>700</b>
<b>Output End Depth</b>	<b>3300</b>
<b>Date Created</b>	<b>22 Oct 2014</b>

---

Version 1.4

## Offset Well

Operator:	NOV
Contractor:	Catoosa
Well Name:	Lucy Pad
County/Parish:	Creek
Field/Block:	Lucy
Country:	USA
Spud Date:	Oct 2014
TD Date:	Oct 2014

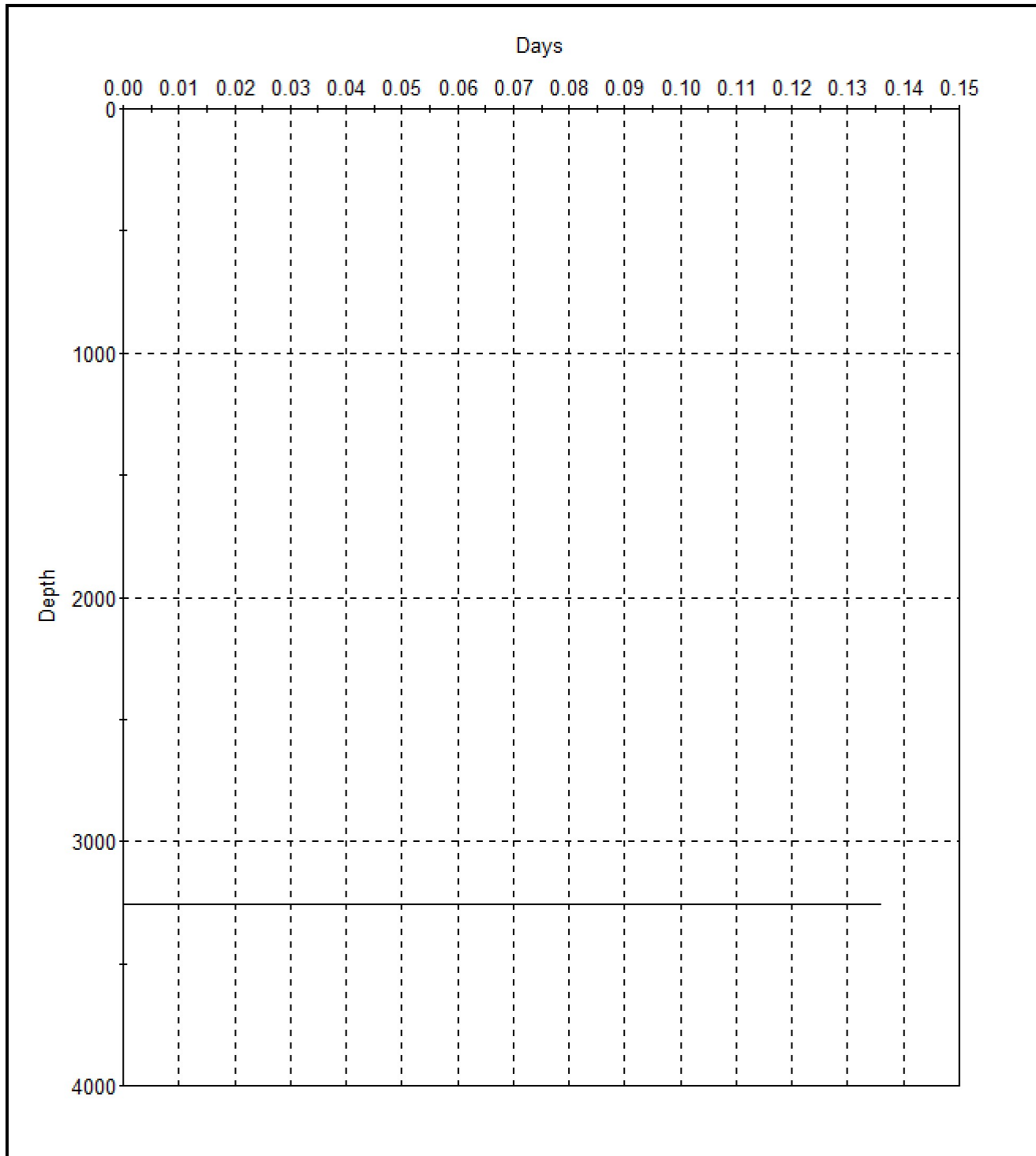


Direction	Start: N 86.92 W	End: N 23.61 W
End Position	W 66 ft	N 182 ft
From Head	194 ft	N 19.86 W

Version 1.4

Operator: NOV	Well Name: Lucy Pad
Contractor: Catoosa	County/Parish: Creek
Spud Date: Oct 2014	Field/Block: Lucy
TD Date: Oct 2014	Country: USA

### Predicted Day Curve



Version 1.4

Operator: NOV  
Contractor: Catoosa  
Spud Date: Oct 2014  
TD Date: Oct 2014

Well Name: Lucy Pad  
County/Parish: Creek  
Field/Block: Lucy  
Country: USA

## Bit Summary



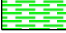


Name	
Dia (in)	8.5
Depth In (ft)	0
Depth Out (ft)	3260
Footage (ft)	3260
Class	
Ave. WOB (klbs)	0.0
Ave. RPM	

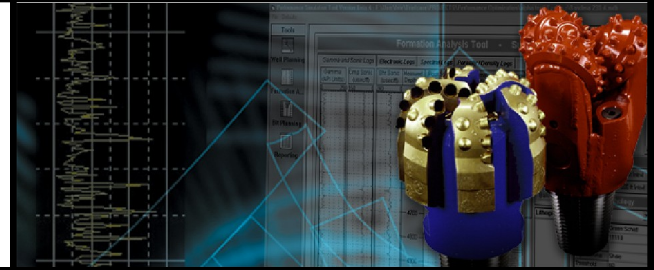
Ave. ROP (ft/hr)	
Ave UCS (psi)	6218
Ave CCS (psi)	6782
Cumulative Ab	N/A
Ave VP	12.4
Ave DSG	0.99
Ave WG	1.19
Bit Run Cost (\$/ft)	0.5

**Version 1.4**

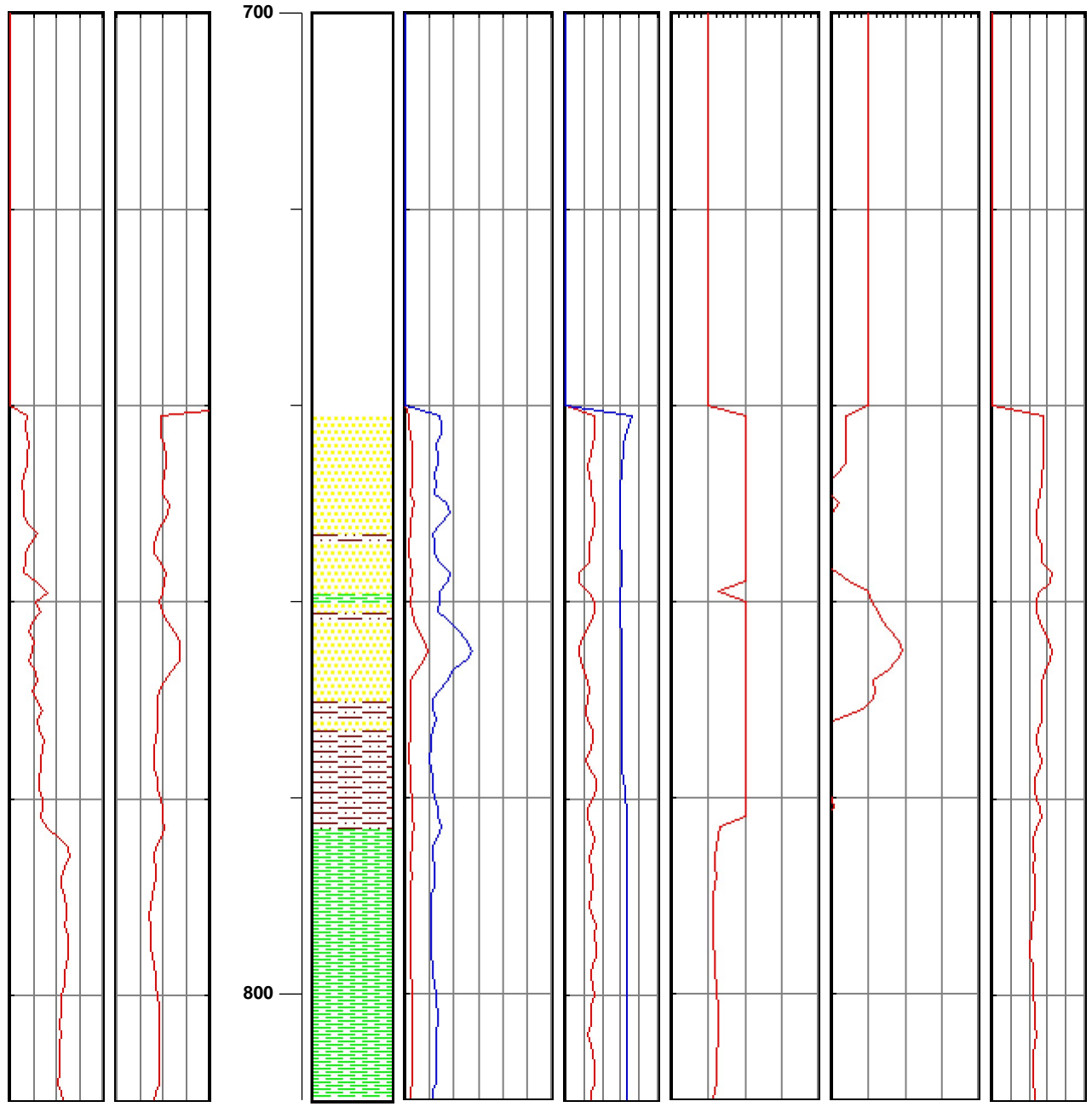
Operator: NOV  
 Contractor: Catoosa  
 Well Name: Lucy Pad  
 County/Parish: Creek  
 Field/Block: Lucy

**Lithology Key**

-  Sandstone(m)
-  Siltstone
-  Shale
-  Limestone(Silt)
-  Limestone(xln)



Gamma API units	Sonic usec/ft	Measured Depth ft	Lithology	Cmp Strength kpsi	Porosity in	Formation Indices	Formation Indices	Fang Degrees
<u>Gamma</u> 0 200	<u>Cmp Sonic</u> 140 40			<u>DM CCS</u> <u>UCS</u> 0 60	<u>Caliper</u> <u>Porosity</u> 0 10 1	<u>Abrasivity</u> 0.1 10 1000	<u>Vibration</u> 0.1 10 1000	<u>Fang</u> 0 60

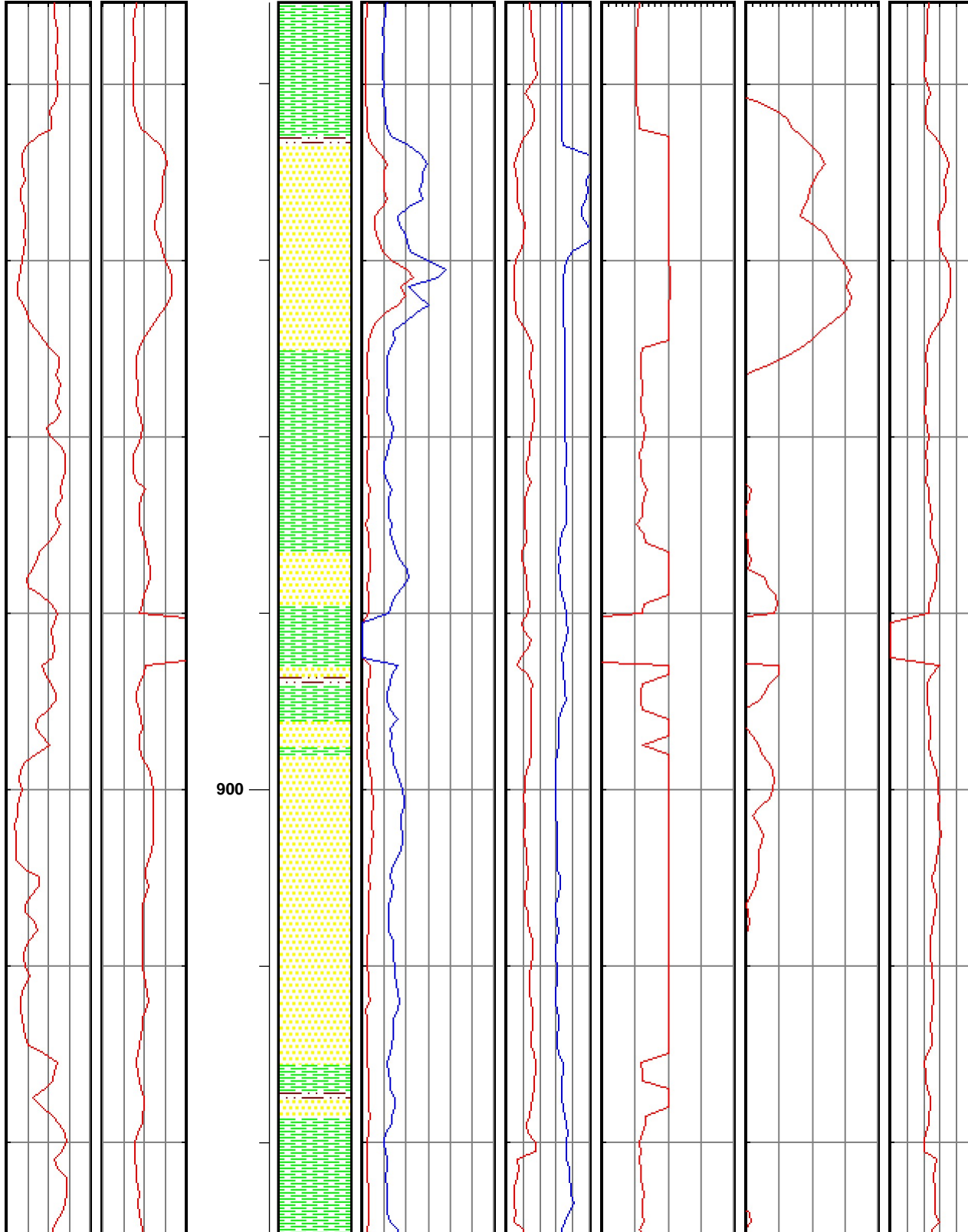


740ft - Endicott

Lucy Pad

Version 1.4

Gamma API units	Sonic usec/ft	Measured Depth ft	Litholog y	Cmp Strength kpsi	Porosity in	Formation Indices	Formation Indices	Fang Degrees
Gamma 0 200	Cmp Sonic 140 40			DM CCS UCS 0 60	Caliper Porosity 0 10 1	Abrasivity 0.1 10 1000	Vibration 0.1 10 1000	Fang 0 60



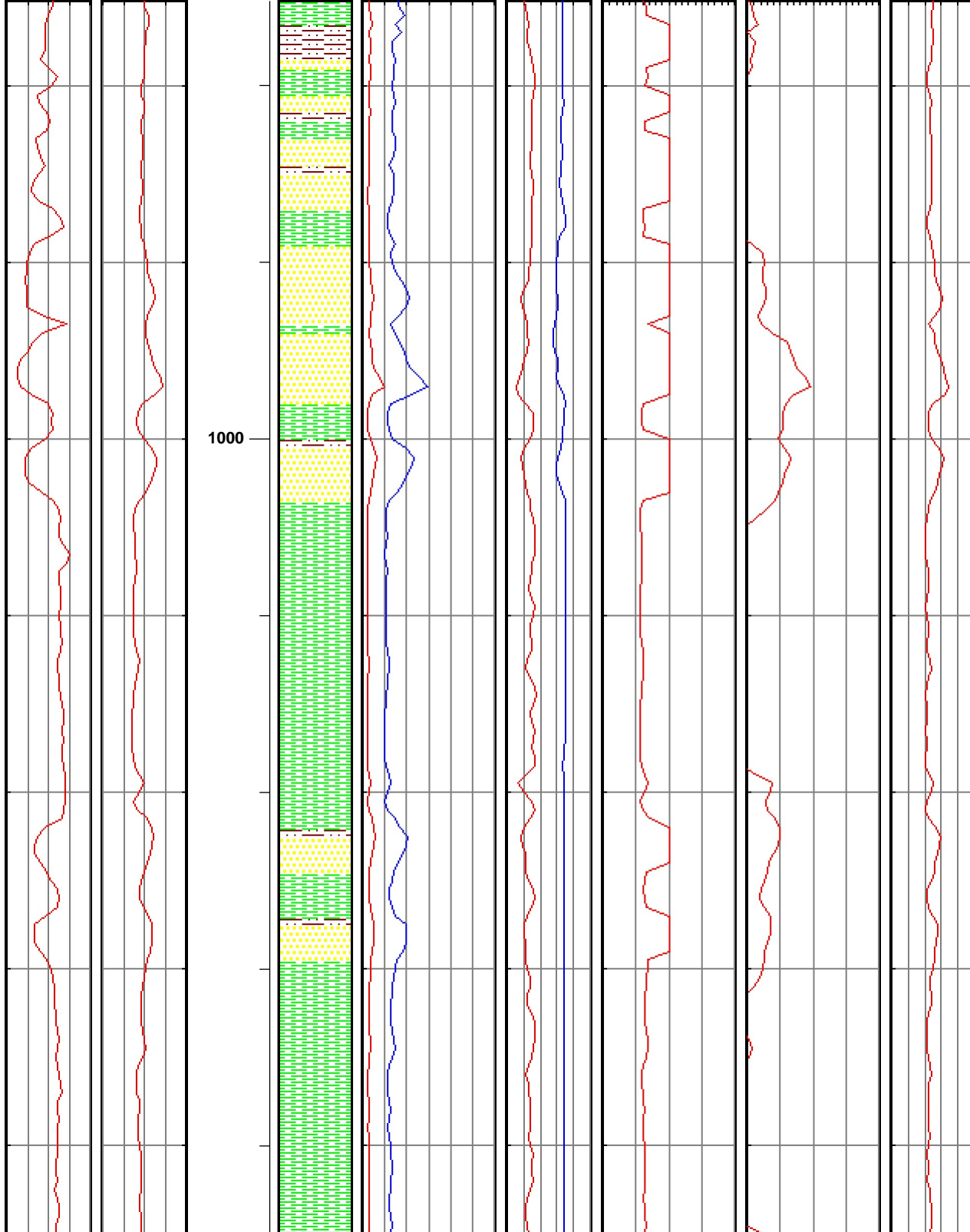
830ft - Tonkawa

Bad Data

Lucy Pad

**Version 1.4**

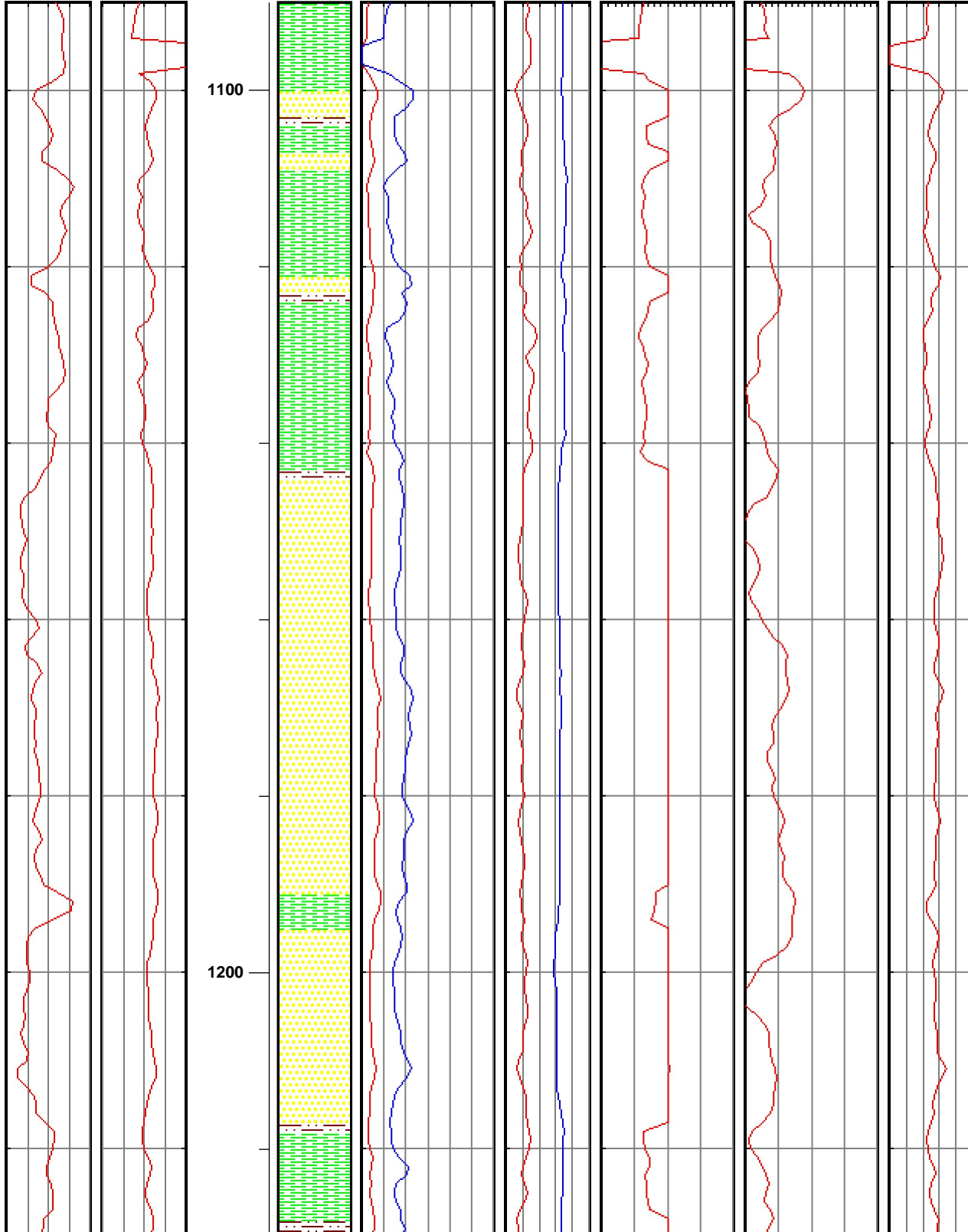
Gamma API units	Sonic usec/ft	Measured Depth ft	Lithology	Cmp Strength kpsi	Porosity in	Formation Indices	Formation Indices	Fang Degrees
Gamma 0 200	Cmp Sonic 140 40			DM CCS UCS 0 60	Caliper Porosity 0 10 0 1	Abrasivity 0.1 10 1000	Vibration 0.1 10 1000	Fang 0 60



Lucy Pad

**Version 1.4**

Gamma API units	Sonic usec/ft	Measured Depth ft	Litholog y	Cmp Strength kpsi	Porosity in	Formation Indices	Formation Indices	Fang Degrees
Gamma 0 200	Cmp Sonic 140 40			DM CCS UCS 0 60	Caliper Porosity 0 10 0 1	Abrasivity 0.1 10 1000	Vibration 0.1 10 1000	Fang 0 60

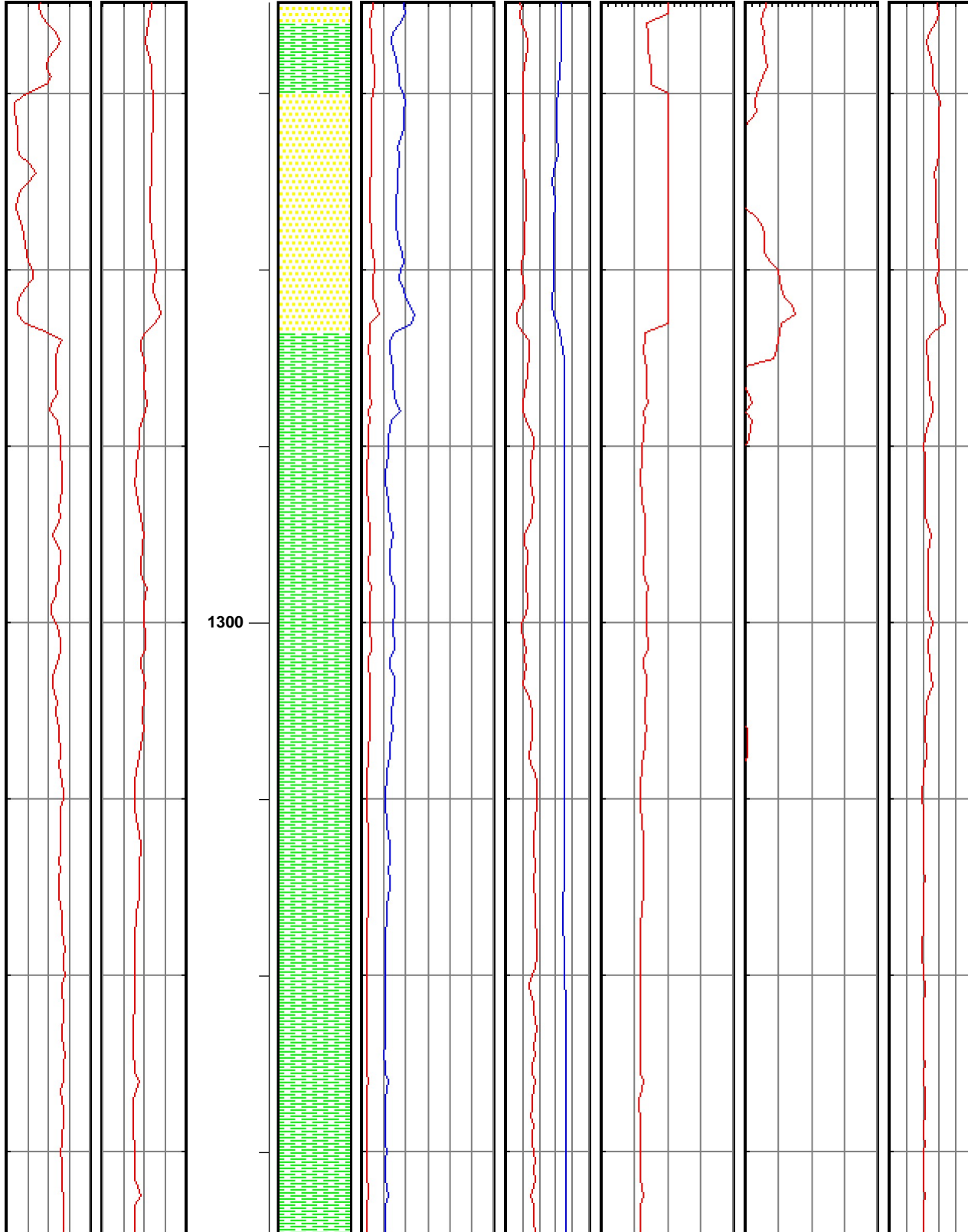


Lucy Pad



**Version 1.4**

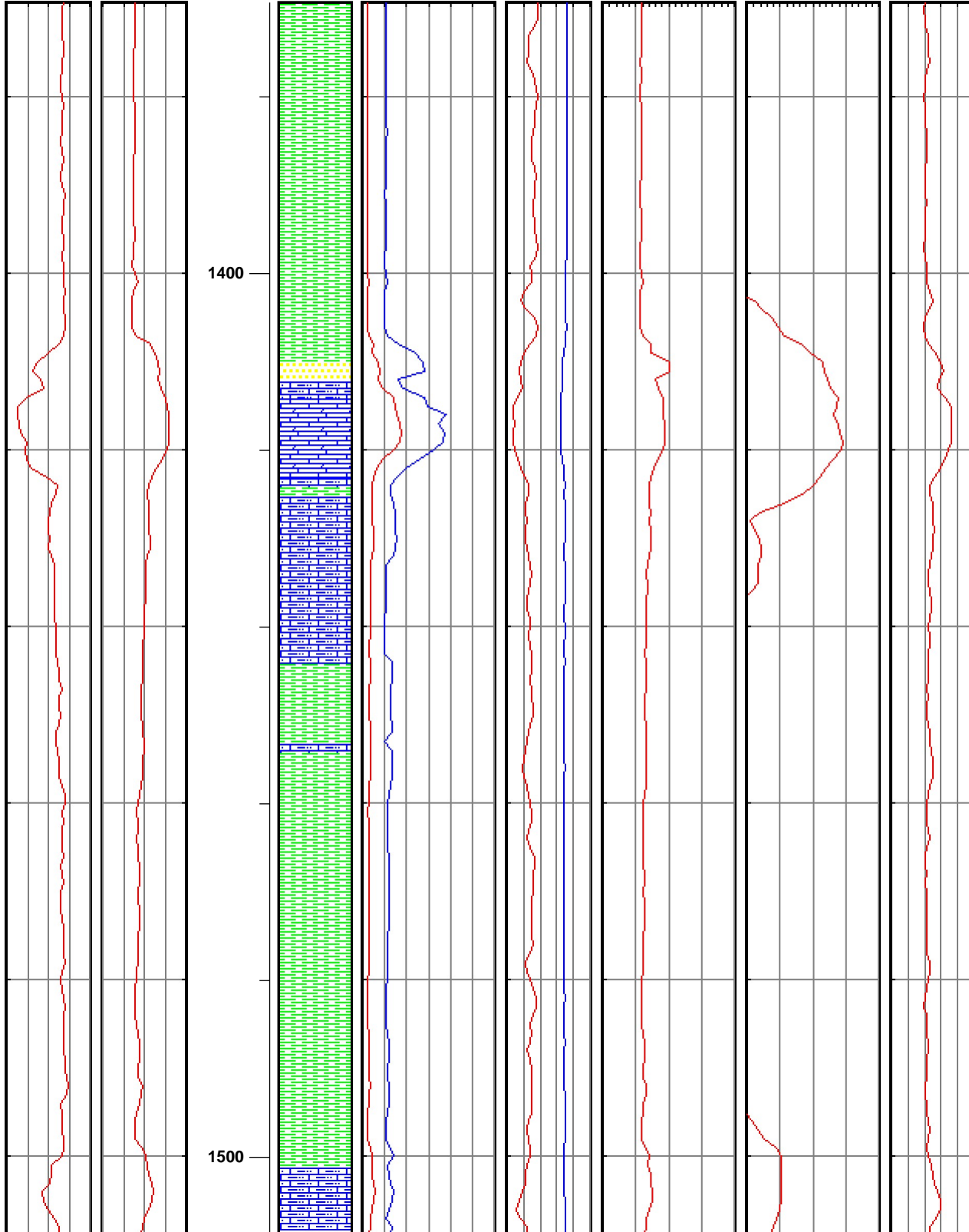
Gamma API units	Sonic usec/ft	Measured Depth ft	Litholog y	Cmp Strength kpsi	Porosity in	Formation Indices	Formation Indices	Fang Degrees
Gamma 0 200	Cmp Sonic 140 40			DM CCS UCS 0 60	Caliper Porosity 0 10 0 1	Abrasivity 0.1 10 1000	Vibration 0.1 10 1000	Fang 0 60



Lucy Pad

Version 1.4

Gamma API units	Sonic usec/ft	Measured Depth ft	Lithology	Cmp Strength kpsi	Porosity in	Formation Indices	Formation Indices	Fang Degrees
<small>Gamma</small> 0 200	<small>Cmp Sonic</small> 140 40			<small>DM CCS</small> 0 60 <small>UCS</small>	<small>Caliper</small> 0 10 <small>Porosity</small>	<small>Abrasivity</small> 0.1 10 1000	<small>Vibration</small> 0.1 10 1000	<small>Fang</small> 0 60

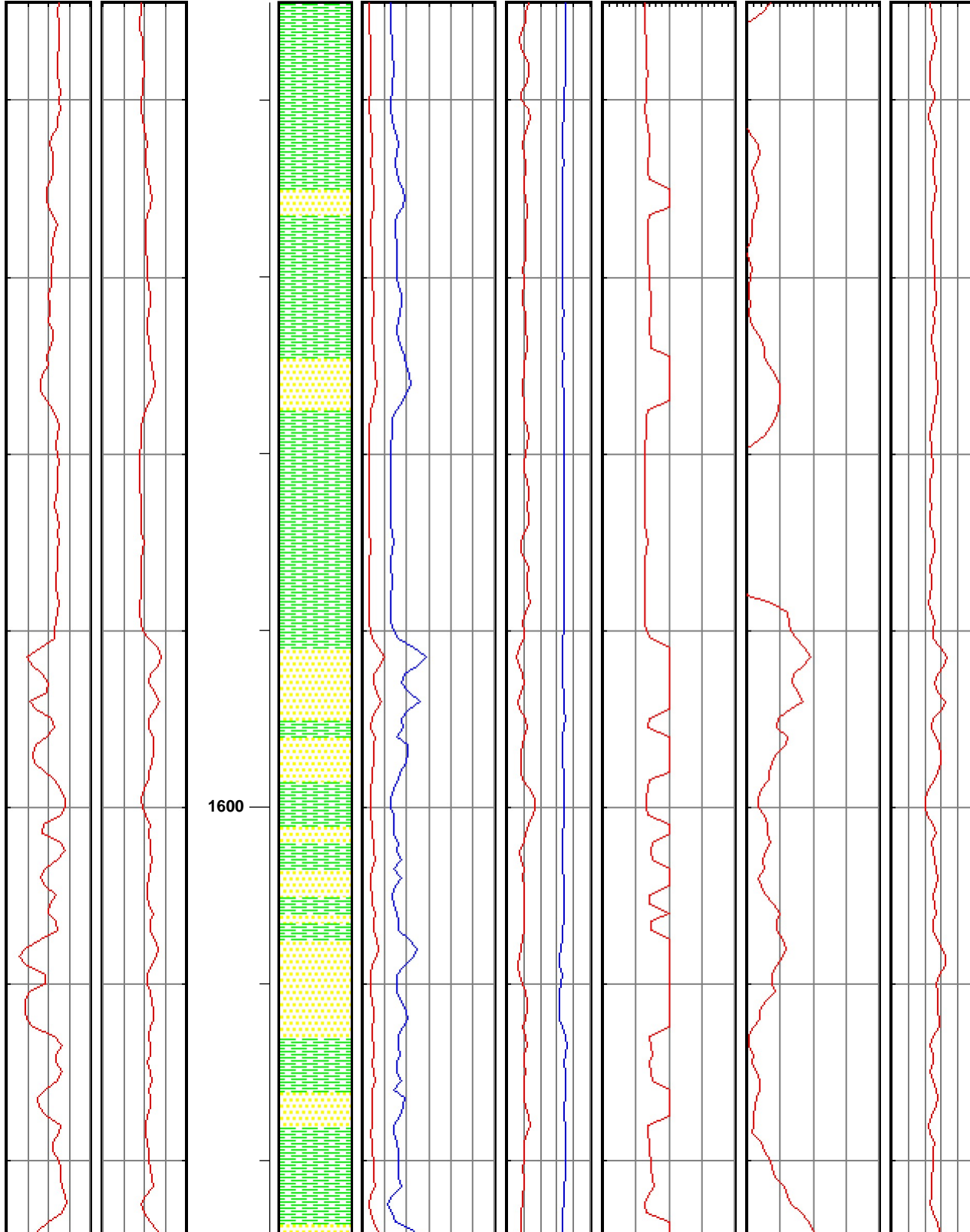


1410ft - Avant L

Lucy Pad

**Version 1.4**

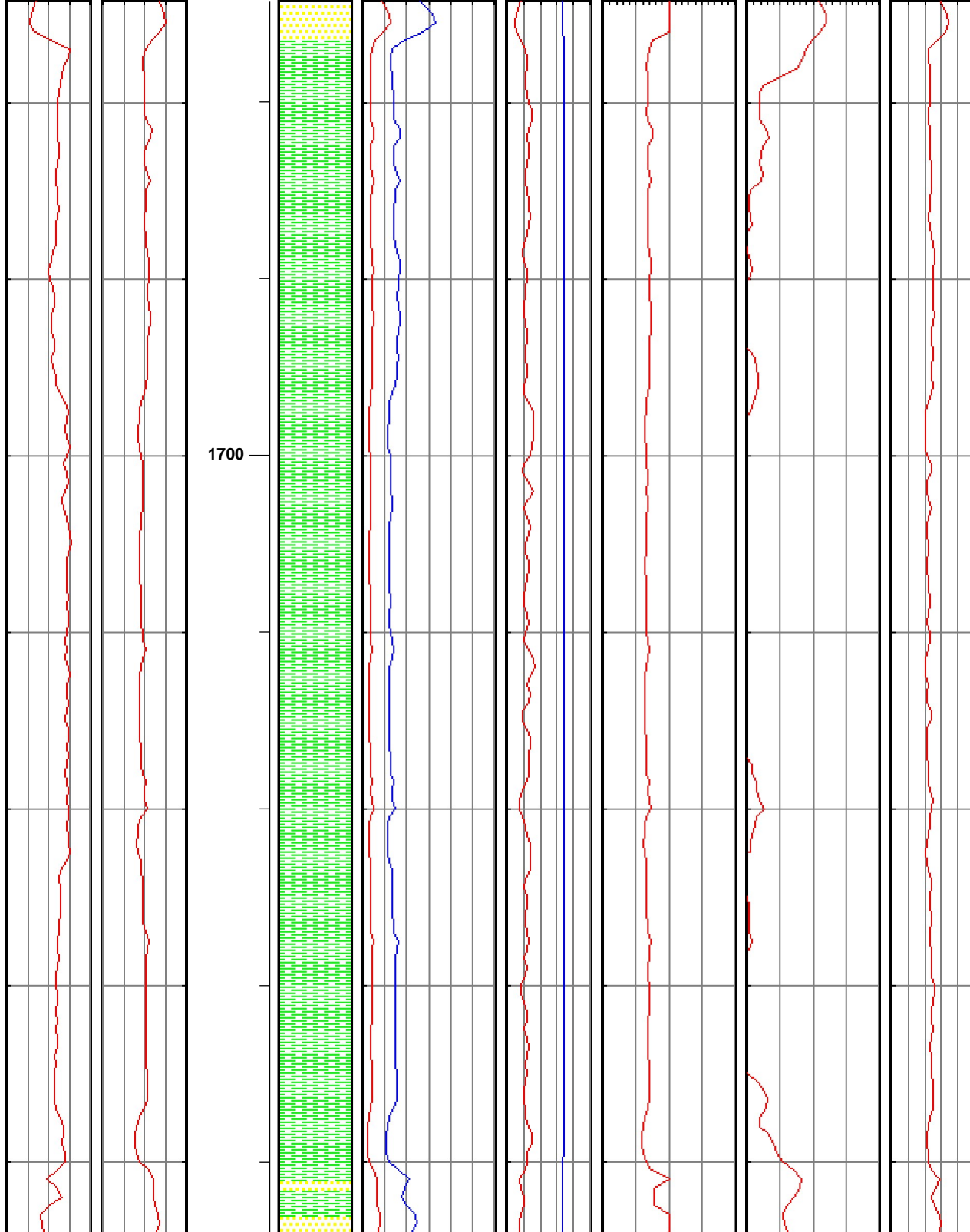
Gamma API units	Sonic usec/ft	Measured Depth ft	Lithology	Cmp Strength kpsi	Porosity in	Formation Indices	Formation Indices	Fang Degrees
Gamma 0 200	Cmp Sonic 140 40			DM CCS UCS 0 60	Caliper Porosity 0 10 0 1	Abrasivity 0.1 10 1000	Vibration 0.1 10 1000	Fang 0 60



Full-Usage  
SS

**Version 1.4**

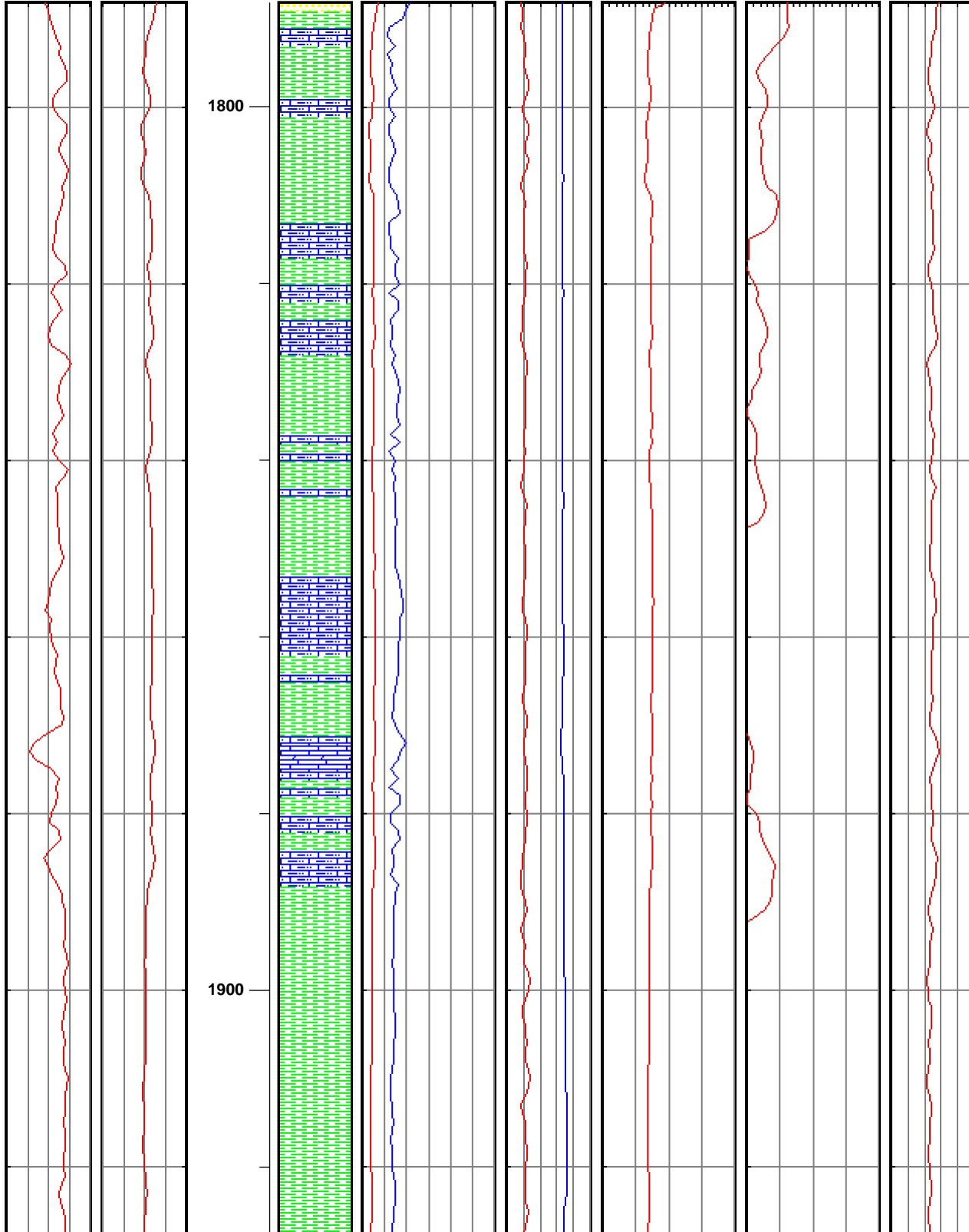
Gamma API units	Sonic usec/ft	Measured Depth ft	Lithology	Cmp Strength kpsi	Porosity in	Formation Indices	Formation Indices	Fang Degrees
Gamma 0 200	Cmp Sonic 140 40			DM CCS UCS 0 60	Caliper Porosity 0 10 0 1	Abrasivity 0.1 10 1000	Vibration 0.1 10 1000	Fang 0 60



Lucy Pad

**Version 1.4**

Gamma API units	Sonic usec/ft	Measured Depth ft	Lithology	Cmp Strength kpsi	Porosity in	Formation Indices	Formation Indices	Fang Degrees
Gamma 0 200	Cmp Sonic 140 40			DM CCS UCS 0 60	Caliper Porosity 0 10 0 1	Abrasivity 0.1 10 1000	Vibration 0.1 10 1000	Fang 0 60

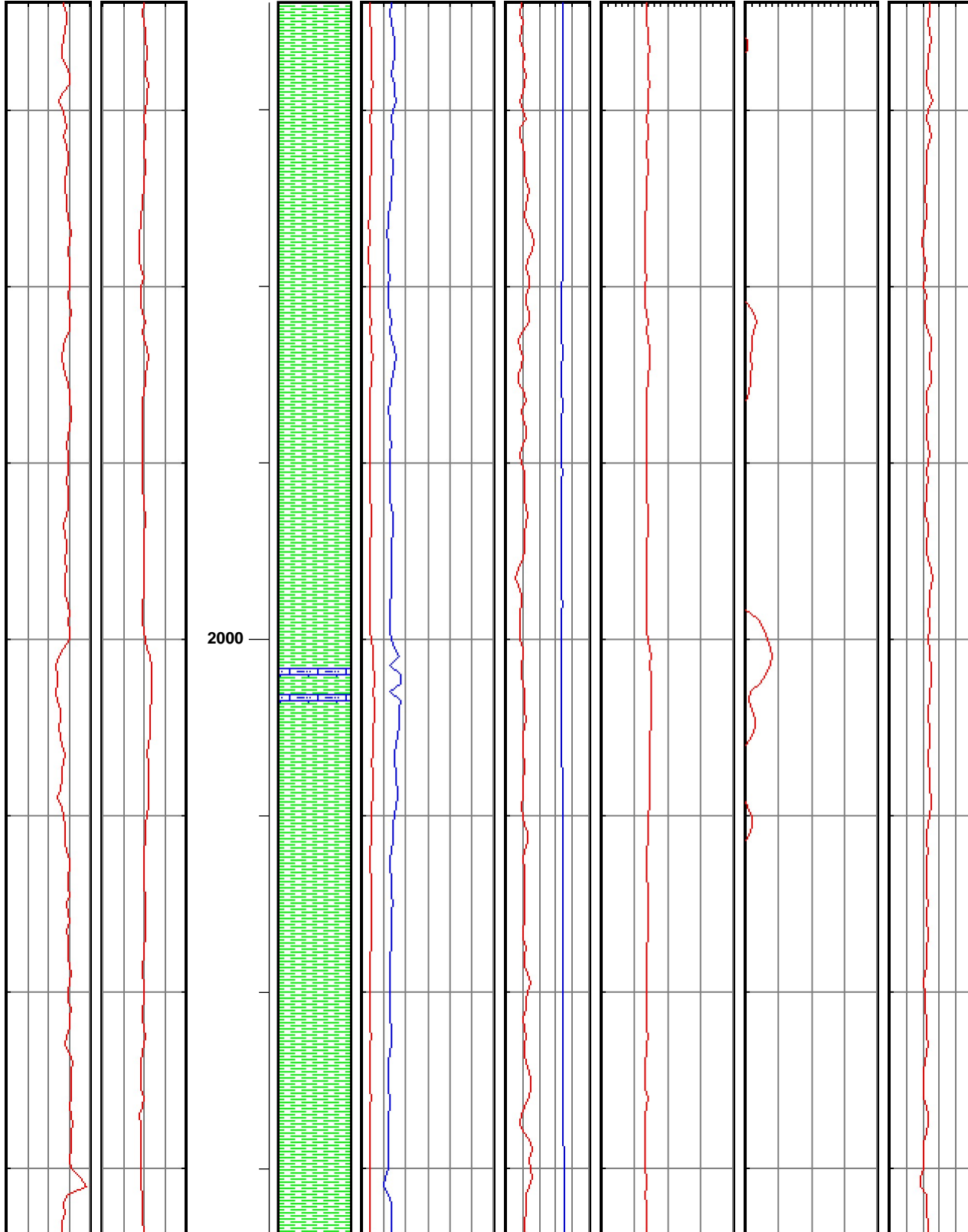


173011-  
Hogshooter

Lucy Pad

**Version 1.4**

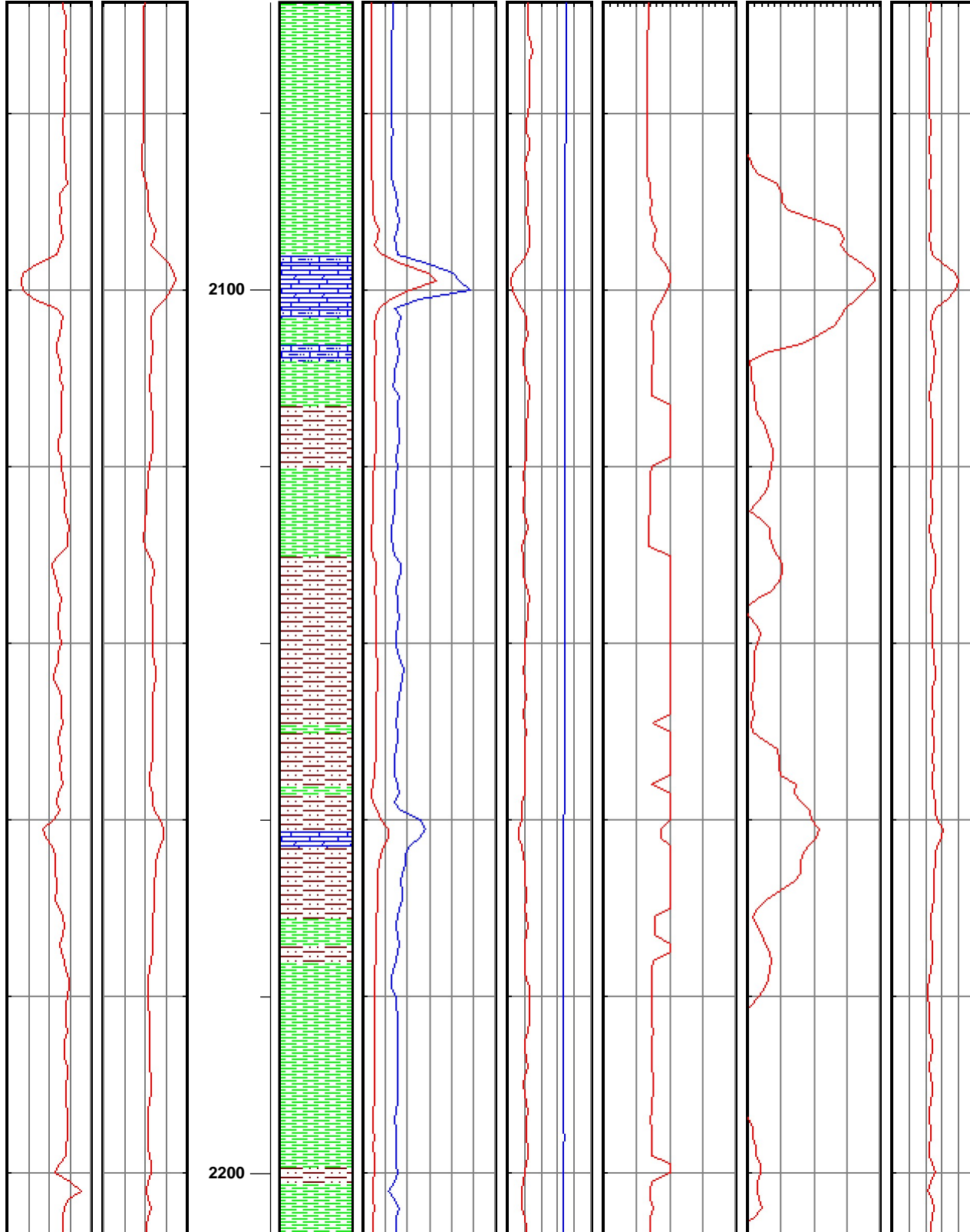
Gamma API units	Sonic usec/ft	Measured Depth ft	Lithology	Cmp Strength kpsi	Porosity in	Formation Indices	Formation Indices	Fang Degrees
Gamma 0 200	Cmp Sonic 140 40			DM CCS UCS 0 60	Caliper Porosity 0 10 0 1	Abrasivity 0.1 10 1000	Vibration 0.1 10 1000	Fang 0 60



Lucy Pad

**Version 1.4**

Gamma API units	Sonic usec/ft	Measured Depth ft	Lithology	Cmp Strength kpsi	Porosity in	Formation Indices	Formation Indices	Fang Degrees
Gamma 0 200	Cmp Sonic 140 40			DM CCS UCS 0 60	Caliper Porosity 0 10 0 1	Abrasivity 0.1 10 1000	Vibration 0.1 10 1000	Fang 0 60

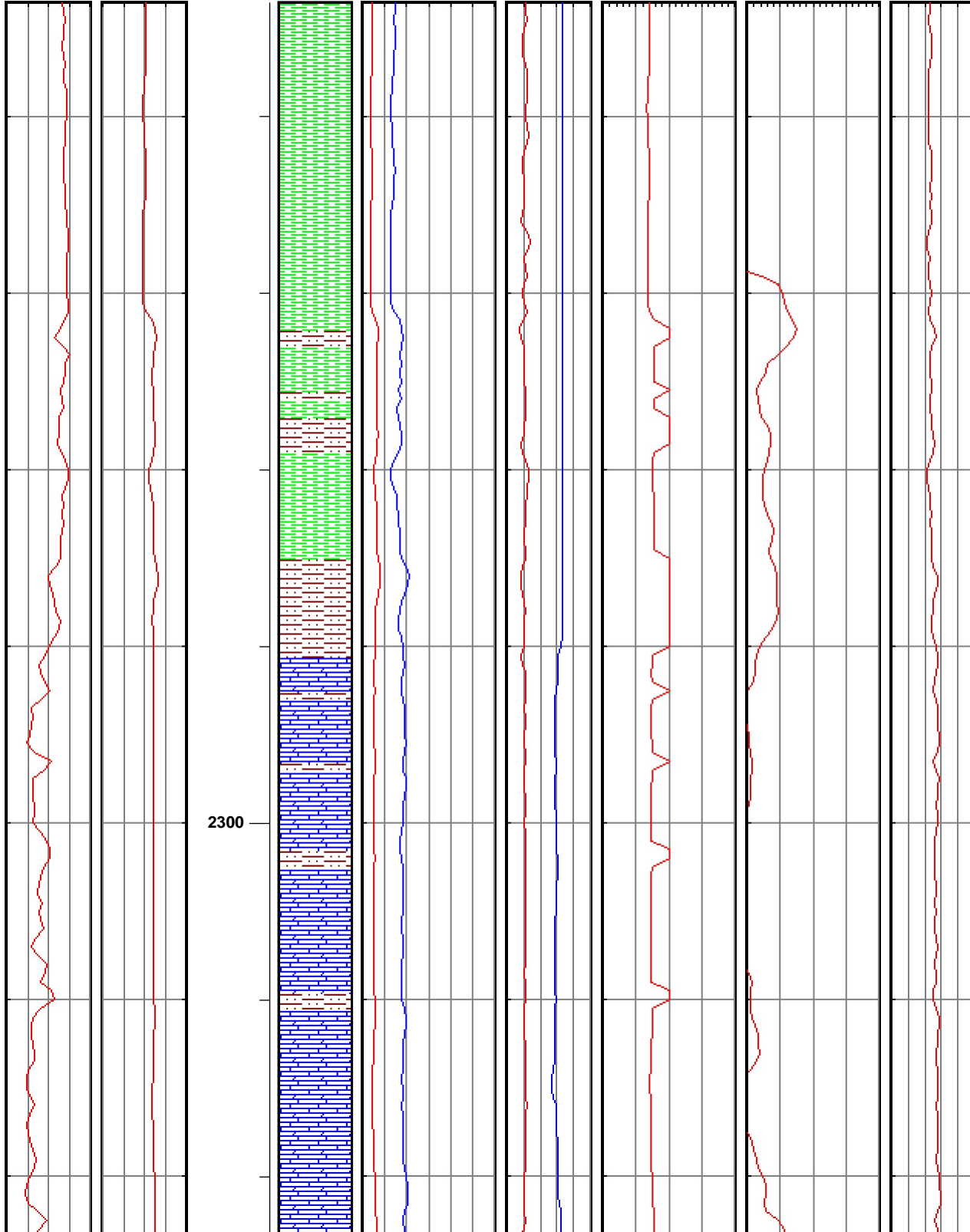


2110ft -  
Checkerboard

Lucy Pad

Version 1.4

Gamma API units	Sonic usec/ft	Measured Depth ft	Lithology	Cmp Strength kpsi	Porosity in	Formation Indices	Formation Indices	Fang Degrees
Gamma 0 200	Cmp Sonic 140 40			DM CCS UCS 0 60	Caliper Porosity 0 10 0 1	Abrasivity 0.1 10 1000	Vibration 0.1 10 1000	Fang 0 60

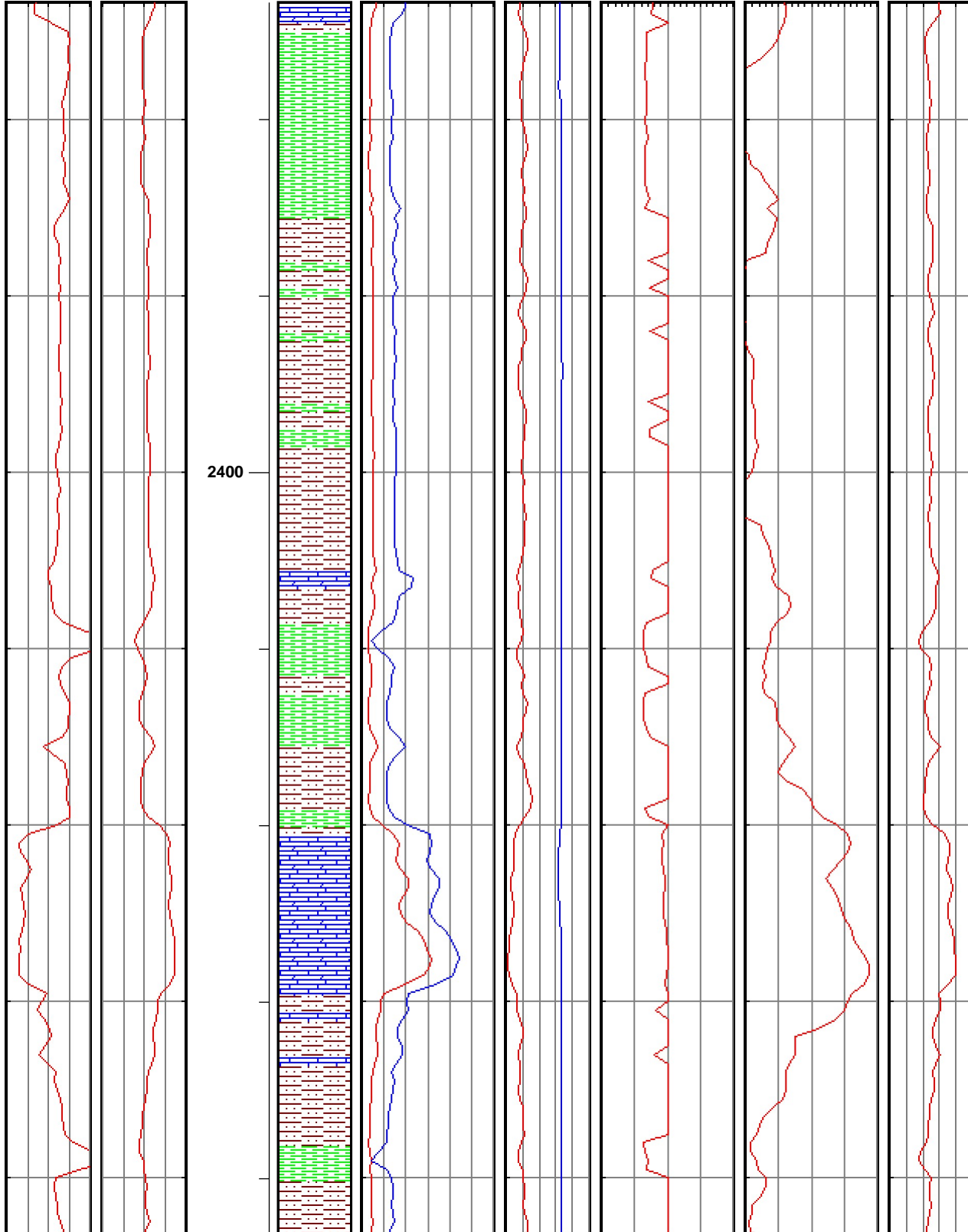


Lucy Pad



**Version 1.4**

Gamma API units	Sonic usec/ft	Measured Depth ft	Lithology	Cmp Strength kpsi	Porosity in	Formation Indices	Formation Indices	Fang Degrees
Gamma 0 200	Cmp Sonic 140 40			DM CCS UCS 0 60	Caliper Porosity 0 10 0 1	Abrasivity 0.1 10 1000	Vibration 0.1 10 1000	Fang 0 60

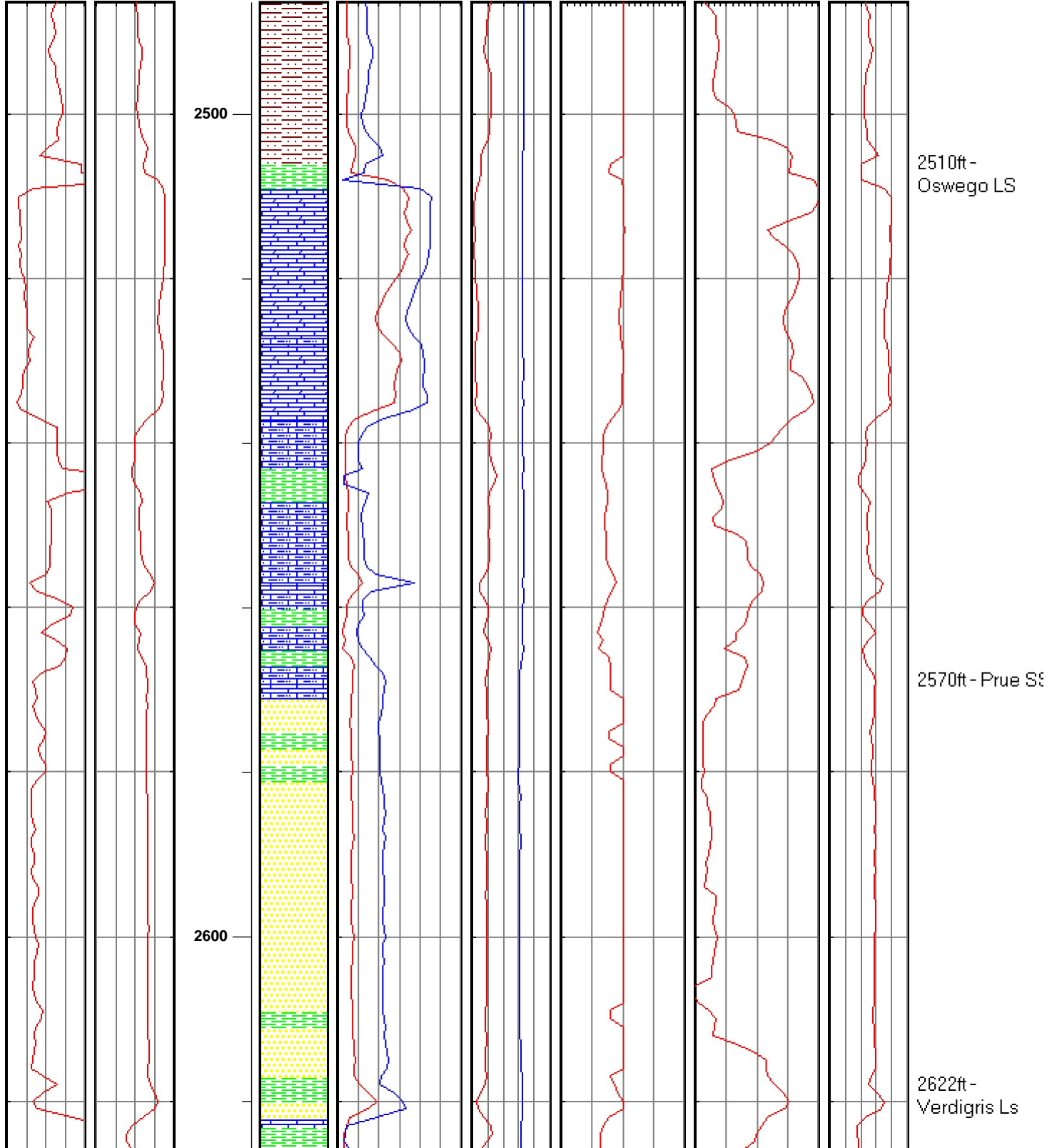


2430ft - Big Lim

Lucy Pad

Version 1.4

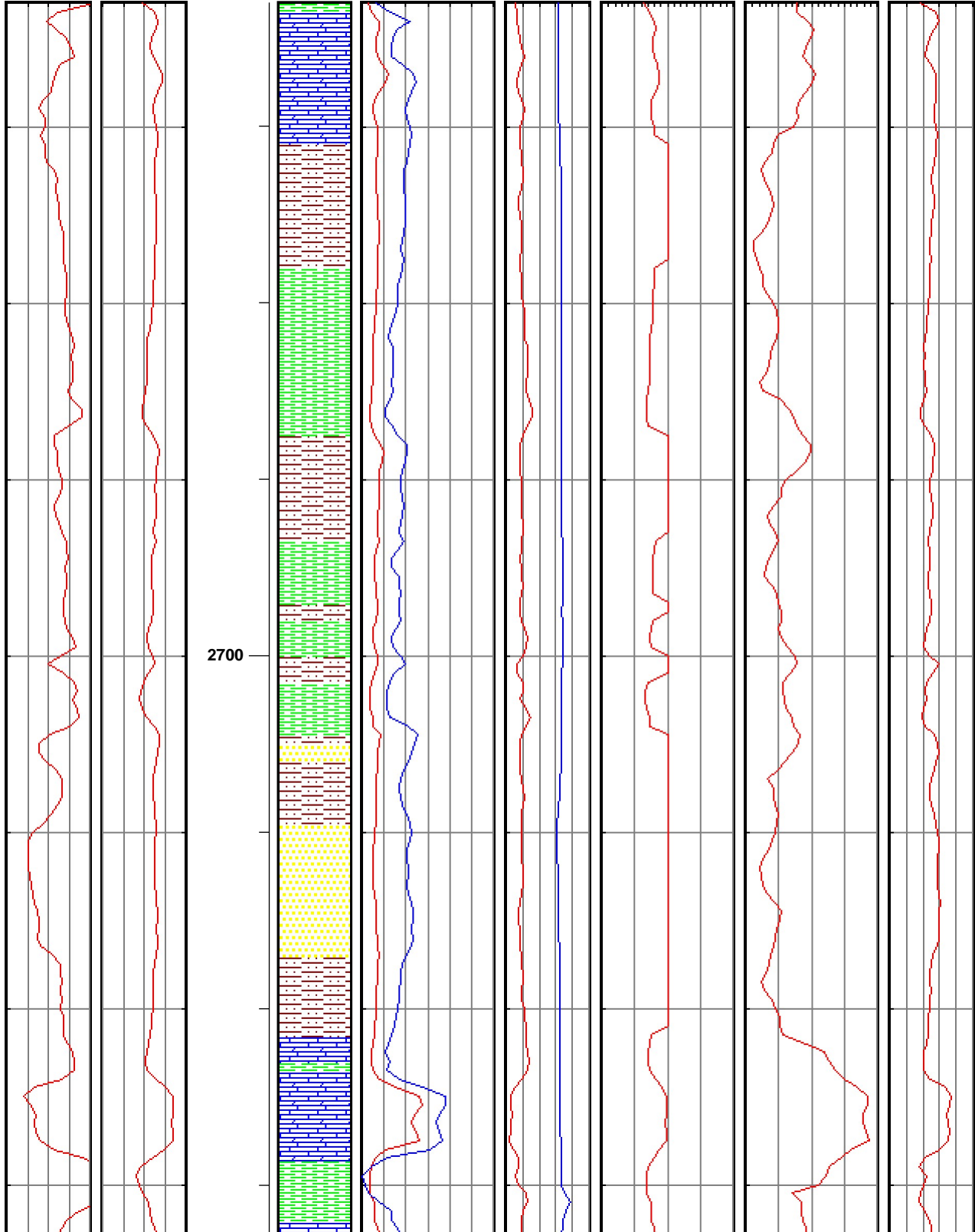
Gamma API units	Sonic usec/ft	Measured Depth ft	Lithology	Cmp Strength kpsi	Porosity in	Formation Indices	Formation Indices	Fang Degrees
Gamma 0 200	Cmp Sonic 140 40			DM CCS UCS 0 60	Caliper Porosity 0 10 0 1	Abrasivity 0.1 10 1000	Vibration 0.1 10 1000	Fang 0 60



Lucy Pad

**Version 1.4**

Gamma API units	Sonic usec/ft	Measured Depth ft	Lithology	Cmp Strength kpsi	Porosity in	Formation Indices	Formation Indices	Fang Degrees
Gamma 0 200	Cmp Sonic 140 40			DM CCS UCS 0 60	Caliper Porosity 0 10 0 1	Abrasivity 0.1 10 1000	Vibration 0.1 10 1000	Fang 0 60



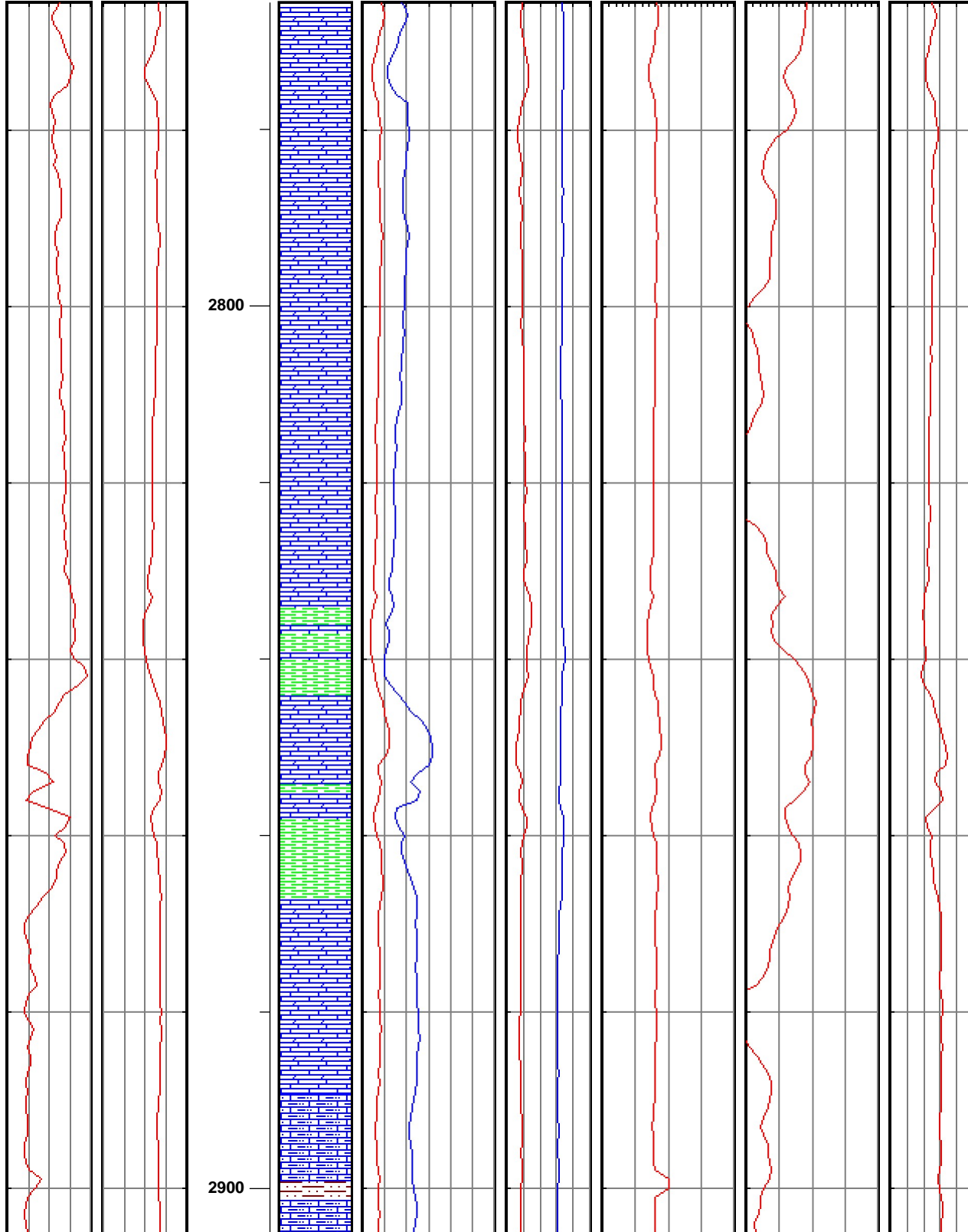
2642ft -  
Skinner SS

2742ft - Pink LS

Lucy Pad

**Version 1.4**

Gamma API units	Sonic usec/ft	Measured Depth ft	Lithology	Cmp Strength kpsi	Porosity in	Formation Indices	Formation Indices	Fang Degrees
<small>Gamma</small> 0 200	<small>Cmp Sonic</small> 140 40			<small>DM CCS</small> 0 60 <small>UCS</small>	<small>Caliper</small> 0 10 <small>Porosity</small>	<small>Abrasivity</small> 0.1 10 1000	<small>Vibration</small> 0.1 10 1000	<small>Fang</small> 0 60



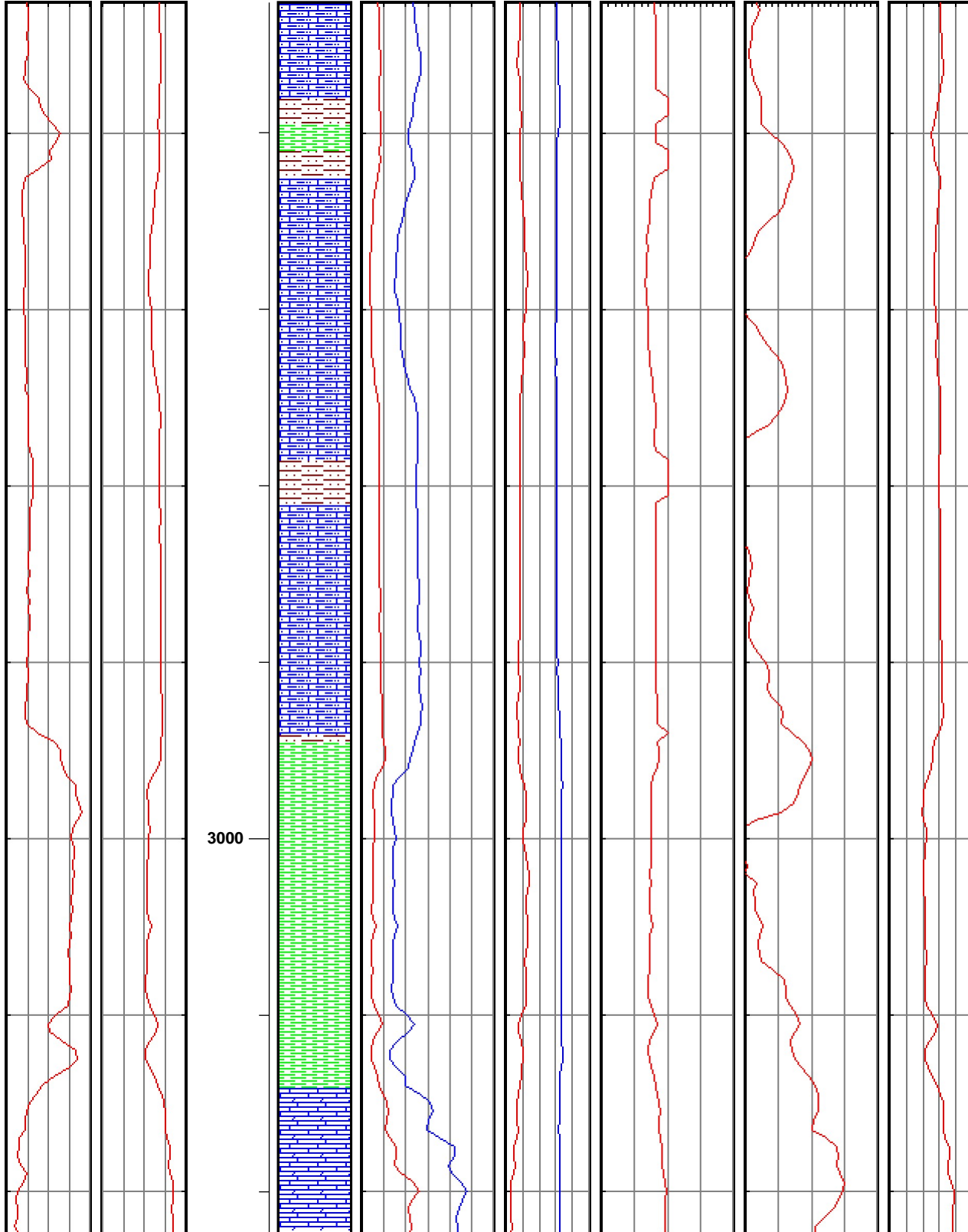
2846ft - Inola LS

2888ft - Bartlesville LS

Lucy Pad

Version 1.4

Gamma API units	Sonic usec/ft	Measured Depth ft	Lithology	Cmp Strength kpsi	Porosity in	Formation Indices	Formation Indices	Fang Degrees
Gamma 0 200	Cmp Sonic 140 40			DM CCS UCS 0 60	Caliper Porosity 0 10 0 1	Abrasivity 0.1 10 1000	Vibration 0.1 10 1000	Fang 0 60

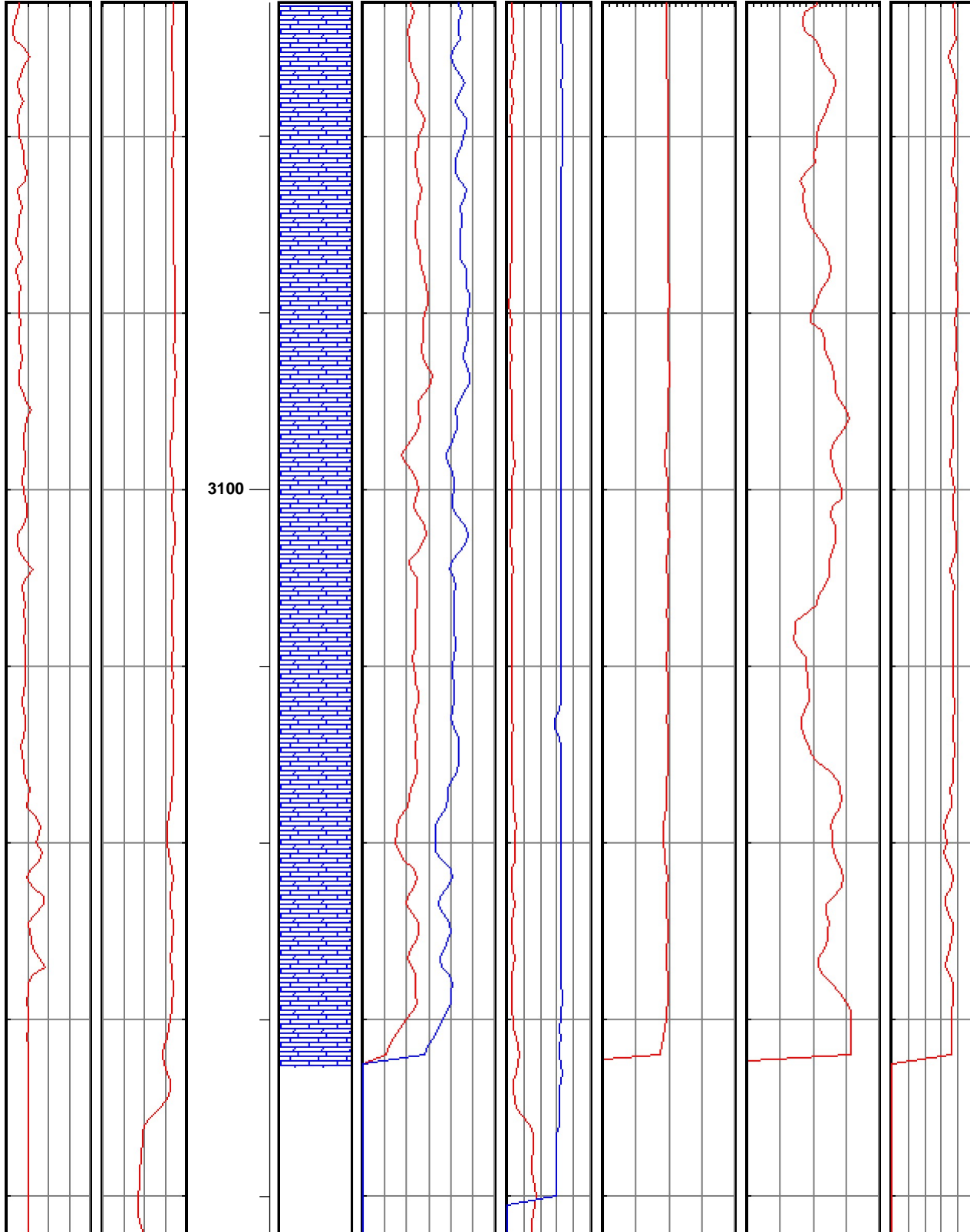


3021ft -  
Mississippi

Lucy Pad

Version 1.4

Gamma API units	Sonic usec/ft	Measured Depth ft	Lithology	Cmp Strength kpsi	Porosity in	Formation Indices	Formation Indices	Fang Degrees
Gamma 0 200	Cmp Sonic 140 40			DM CCS UCS 0 60	Caliper Porosity 0 10 0 1	Abrasivity 0.1 10 1000	Vibration 0.1 10 1000	Fang 0 60



Lucy Pad

**Version 1.4**

Gamma API units	Sonic usec/ft	Measured Depth ft	Litholog y	Cmp Strength kpsi	Porosity in	Formation Indices	Formation Indices	Fang Degrees
<small>Gamma</small> 0 200	<small>Cmp Sonic</small> 140 40			<small>DM CCS</small> 0 60 <small>UCS</small>	<small>Caliper</small> 0 10 <small>Porosity</small>	<small>Abrasivity</small> 0.1 10 1000	<small>Vibration</small> 0.1 10 1000	<small>Fang</small> 0 60

