
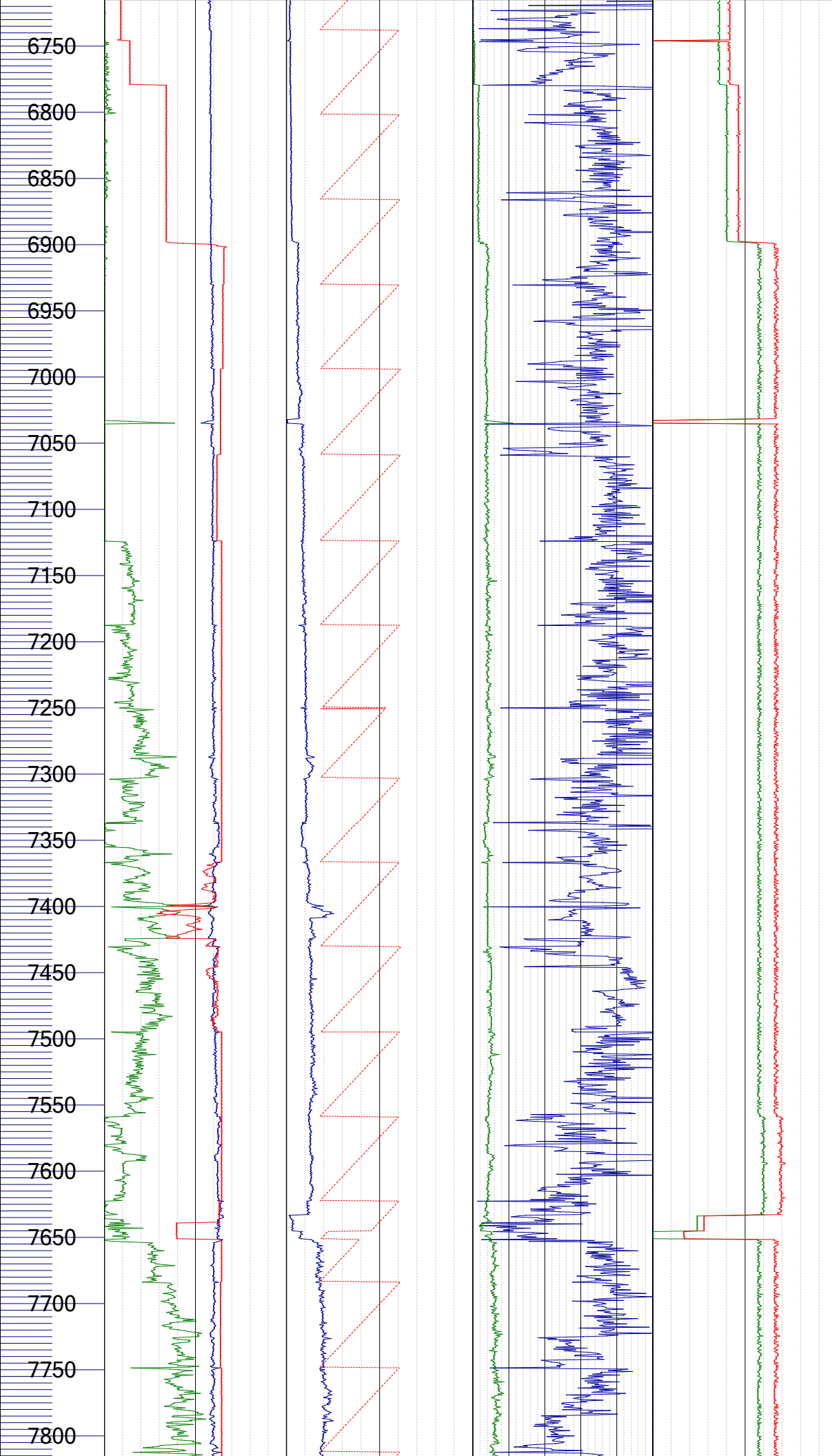
 Weatherford®		Weatherford EDR Drill Log Depth Based Data Green Canyon 955 H-005			 Weatherford®	
Legend Drilling Data: BC bit condition BS bit size CB core bit CBR core bit re-run CR core CSG casing DC depth correction DIR directional survey DS deviation survey DST drill stem test LC lost circulation LCM lost circ material MM mud motor NB new bit PO pump output PP pump pressure RPM rotary speed RR re-run bit SPM pump strokes SPP stand pipe pressure TRQ torque TVD true vertical depth WLL wireline log WOB weight on bit Mud Data: CL chlorides FC filter cake FV funnel viscosity LAT lagged after trip		Block: Green Canyon 955 RUE: OCS-G 30344 Well: H-005 Operator: University of Texas at Austin Rig: Helix Q400 Type: Semi-Sub Air gap: 52 ft Water Depth: 6718 ft Location: 27.000506N -90.426708W Target: Methane Hydrate Prognosed TD: 8440 ft			HoleData: 9 7/8" Coring, ,	
					CasingData: N/A, N/A, N/A, N/A	
		Notes: Top of sea floor @ 6718' MD Core Run @ 7645' - 7651' MD Core Run @ 8081' MD			MudData: Water Base Mud	
					Personnel: Daniel Hanson	
Depth	Hookload WOB Top Drive RPM	Standpipe Pressure Hook Position	ROP Interval Torque	SPM 1 SPM 2 Flow In	Comment1	



Begin CR @ 7645' - 7651' MD

Drill ahead to next Core point

