



Weatherford®

Weatherford EDR Drill Log
Time Based Data
Green Canyon 955 H-002



Weatherford®

- Legend**
- Drilling Data:**
 BC bit condition
 BS bit size
 CB core bit
 CBR core bit re-run
 CR core
 CSG casing
 DC depth correction
 DIR directional survey
 DS deviation survey
 DST drill stem test
 LC lost circulation
 LCM lost circ material
 MM mud motor
 NB new bit
 PO pump output
 PP pump pressure
 RPM rotary speed
 RR re-run bit
 SPM pump strokes
 SPP stand pipe pressure
 TRQ torque
 TVD true vertical depth
 WLL wireline log
 WOB weight on bit
- Mud Data:**
 CL chlorides
 FC filter cake
 FV funnel viscosity
 LAT lagged after trip

Block: Green Canyon 955
RUE: OCS-G 30344
Well: H-002
Operator: University of Texas at Austin
Rig: Helix Q400
Type: Semi-Sub
Air gap: 52 ft
Water Depth: 6664 ft
Location: 27.000506N -90.426708W
Target: Methane Hydrate
Prognosed TD: 8440 ft

HoleData:
 9 7/8" Coring, ,

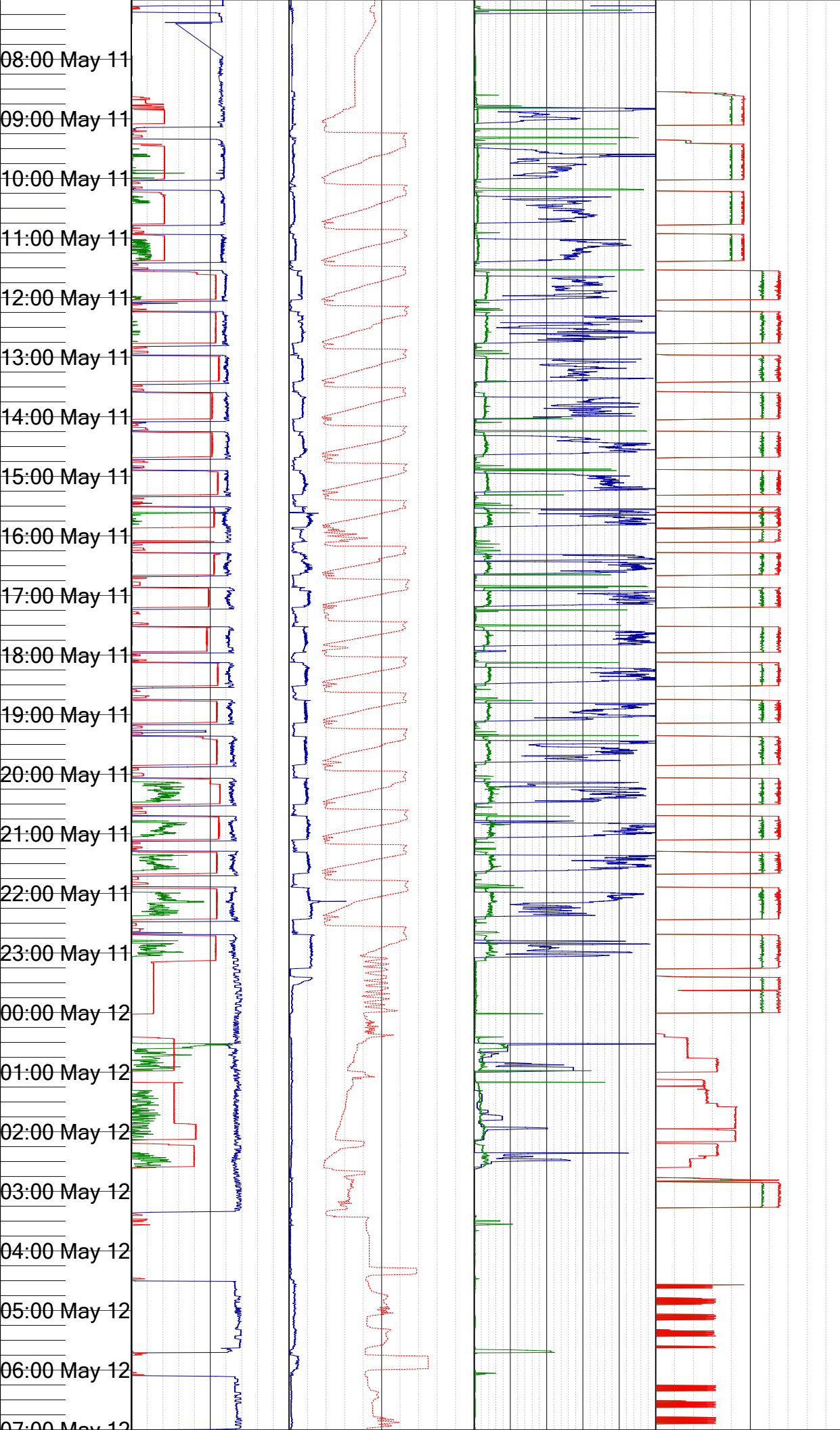
CasingData:
 N/A, N/A, N/A, N/A

MudData:
 Water Base Mud

Personnel:
 Daniel Hanson

Notes:
 Top of sea floor @ 6719' MD
 Begin Coring @ 8062' MD
 TD reached @ 8142' MD 5/14/17 1350 hrs

Time	WOB Kib	Hookload Kib	Top Drive RPM	Cement Pressure psi	Hook Position ft	Standpipe Pressure psi	Torque KFLB	ROP Interval ft/hr	Flow In gal/min	SPM 2 min	SPM 1 min	Comment1
	0 <---> 40	0 <---> 300	0 <---> 150	0 <---> 500	0 <---> 150	0 <---> 1000	0 <---> 40	0 <---> 300	0 <---> 500	0 <---> 125	0 <---> 100	



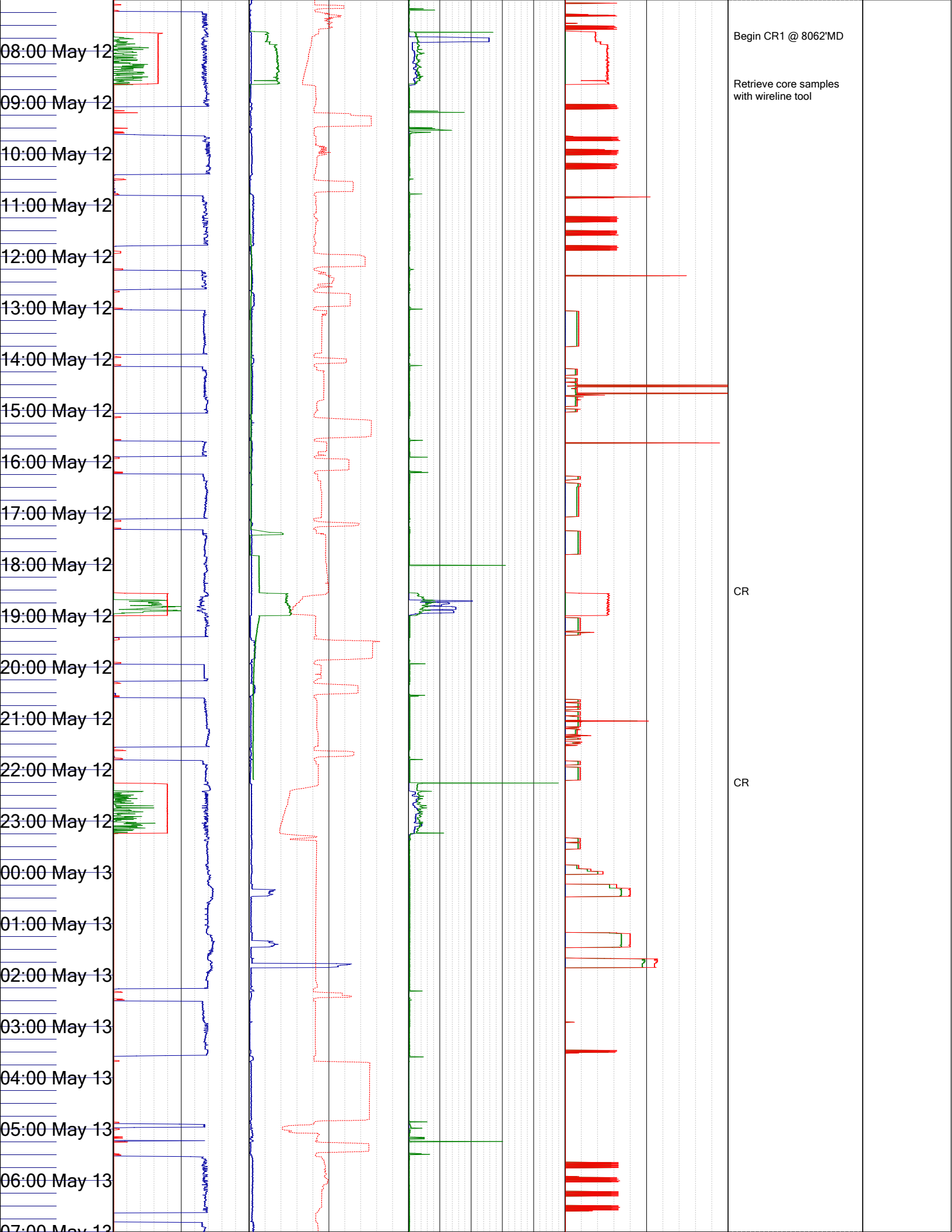
Weatherford Server 3 min
4 sec behind UTC time

Top of sea floor 6719' MD

Set additional RPM
calibration point

zwob

Weatherford EDR
receiving feed from
cement unit

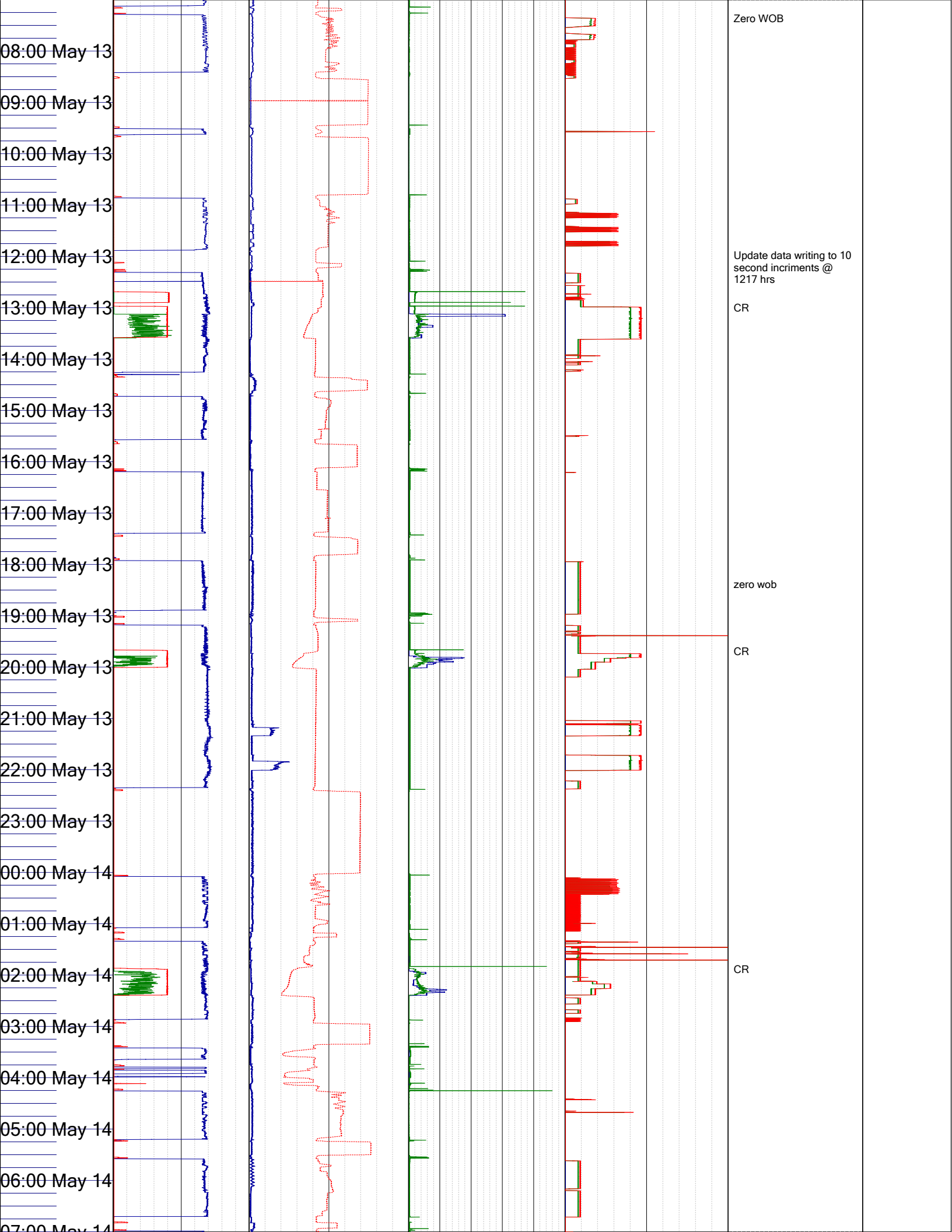


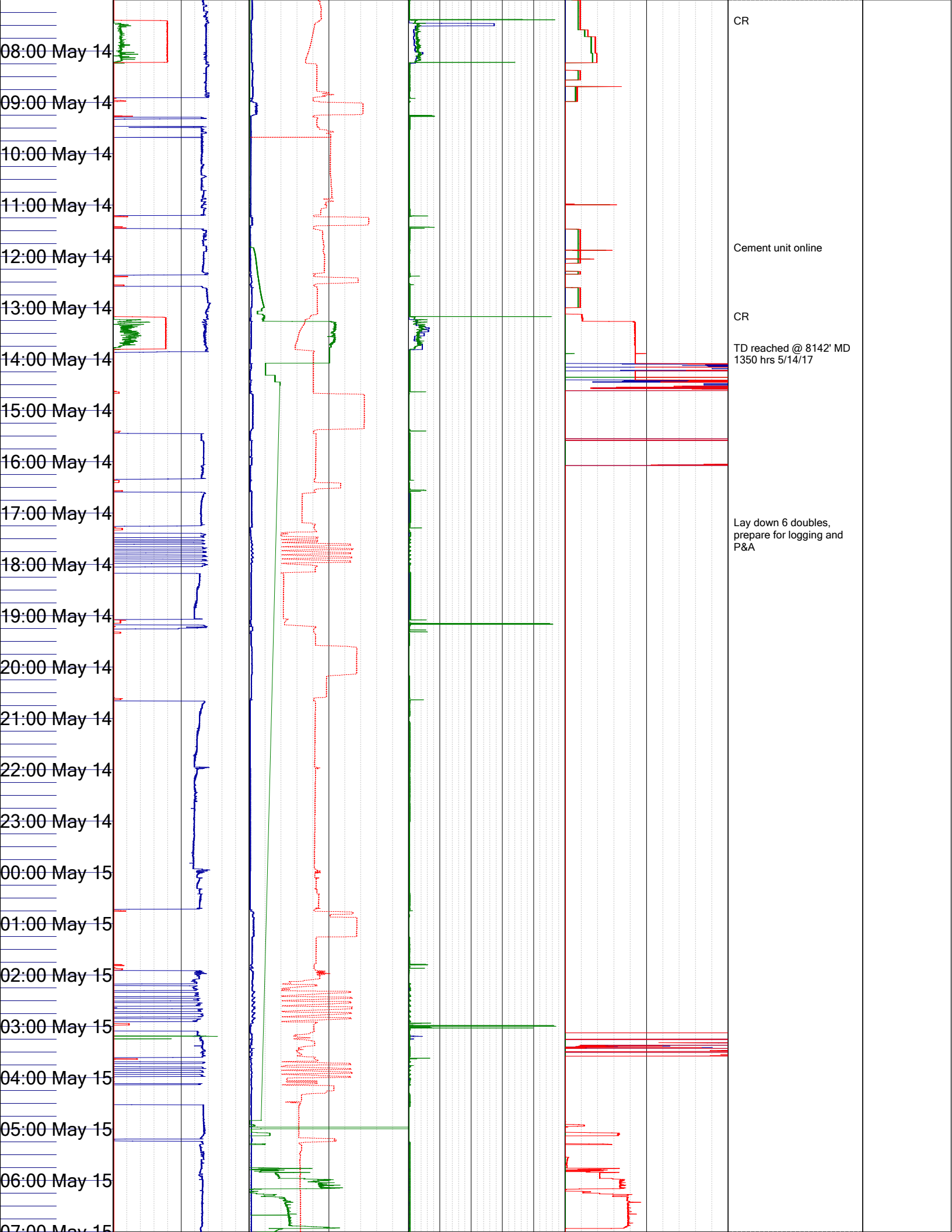
Begin CR1 @ 8062'MD

Retrieve core samples with wireline tool

CR

CR





08:00 May 14
09:00 May 14
10:00 May 14
11:00 May 14
12:00 May 14
13:00 May 14
14:00 May 14
15:00 May 14
16:00 May 14
17:00 May 14
18:00 May 14
19:00 May 14
20:00 May 14
21:00 May 14
22:00 May 14
23:00 May 14
00:00 May 15
01:00 May 15
02:00 May 15
03:00 May 15
04:00 May 15
05:00 May 15
06:00 May 15
07:00 May 15

CR
Cement unit online
CR
TD reached @ 8142' MD
1350 hrs 5/14/17

Lay down 6 doubles,
prepare for logging and
P&A

