



Weatherford EDR Drill Log  
 Depth Based Data  
 Green Canyon 955 H-002



**Legend**

**Drilling Data:**  
 BC bit condition  
 BS bit size  
 CB core bit  
 CBR core bit re-run  
 CR core  
 CSG casing  
 DC depth correction  
 DIR directional survey  
 DS deviation survey  
 DST drill stem test  
 LC lost circulation  
 LCM lost circ material  
 MM mud motor  
 NB new bit  
 PO pump output  
 PP pump pressure  
 RPM rotary speed  
 RR re-run bit  
 SPM pump strokes  
 SPP stand pipe pressure  
 TRQ torque  
 TVD true vertical depth  
 WLL wireline log  
 WOB weight on bit

**Mud Data:**  
 CL chlorides  
 FC filter cake  
 FV funnel viscosity  
 LAT lagged after trip

**Block:** Green Canyon 955  
**RUE:** OCS-G 30344  
**Well:** H-002  
**Operator:** University of Texas at Austin  
**Rig:** Helix Q400  
**Type:** Semi-Sub  
**Air gap:** 52 ft  
**Water Depth:** 6664 ft  
**Location:** 27.000506N -90.426708W  
**Target:** Methane Hydrate  
**Prognosed TD:** 8440 ft

**HoleData:**  
 9 7/8" Coring, ,

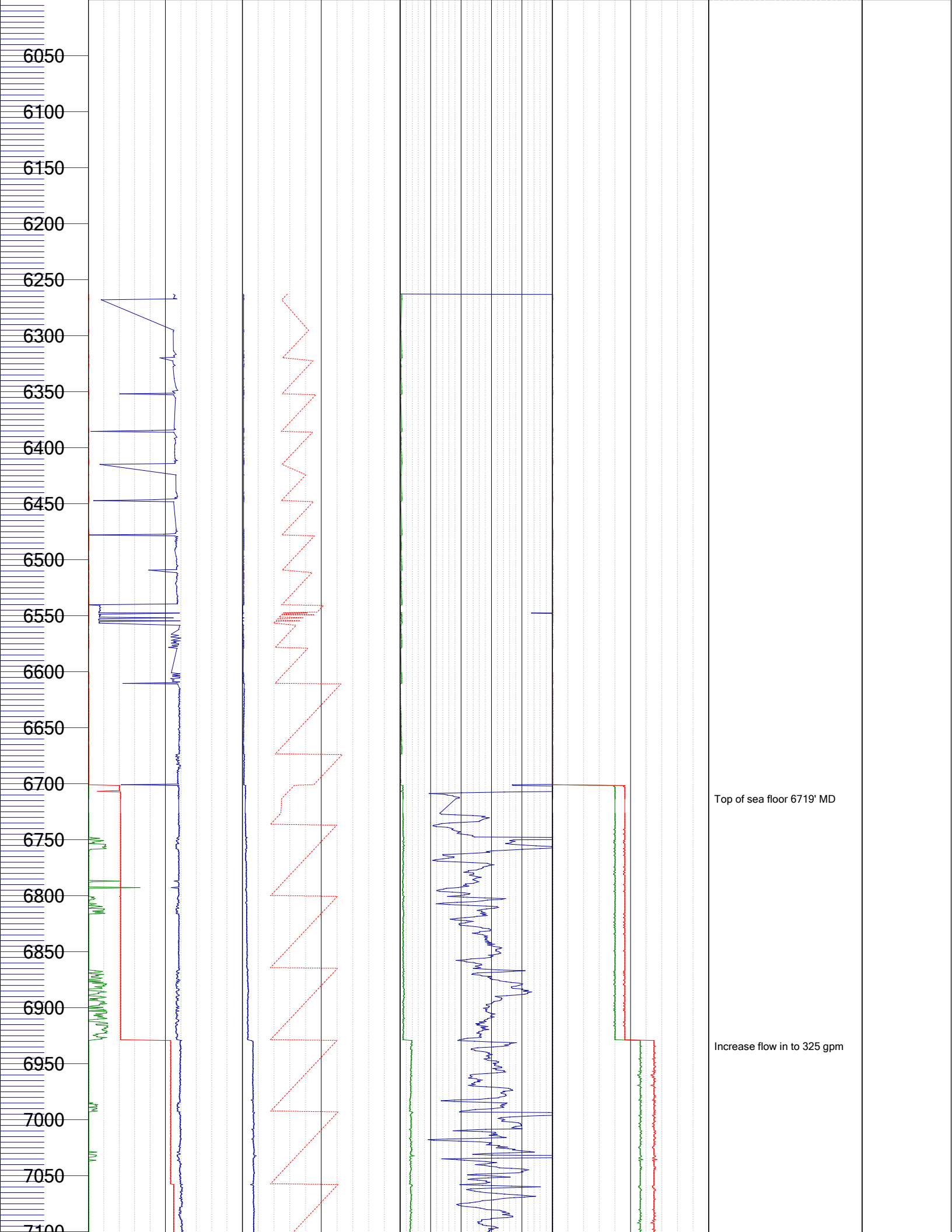
**CasingData:**  
 N/A, N/A, N/A, N/A

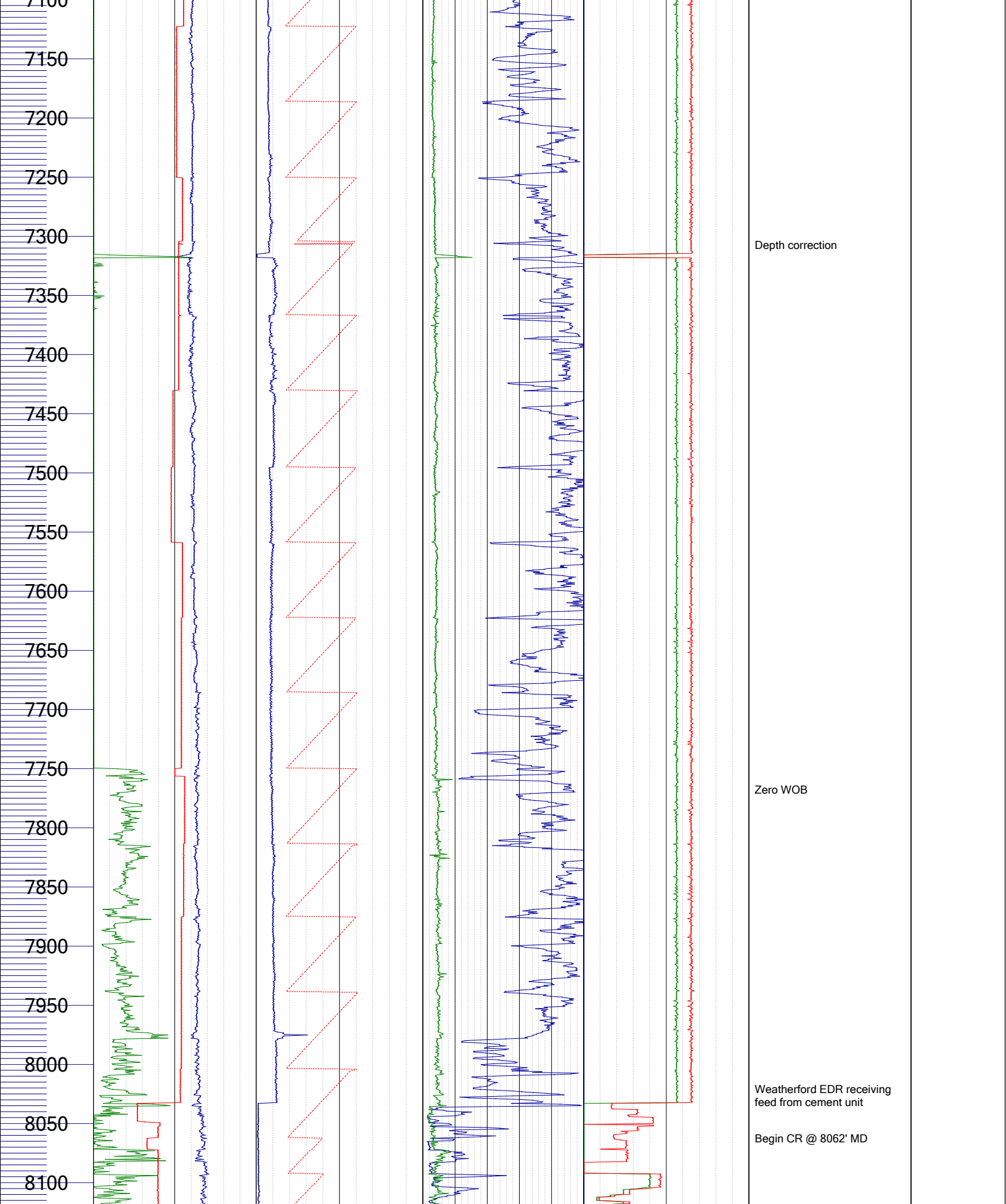
**MudData:**  
 Water Base Mud

**Notes:**  
 Top of sea floor 6719' MD  
 Begin Coring @ 8062' MD

**Personnel:**  
 Daniel Hanson

Depth	Hookload Klb	WOB Klb	Top Drive RPM	Hook Position ft	Standpipe Pressure psi	Torque KFLB	ROP Interval ft/hr	Mud Density In ppg	Flow In gal/min	SPM 2 min	SPM 1 min	Comment1
	0 <---> 300	0 <---> 40	0 <---> 150	0 <---> 150	0 <---> 1000	0 <---> 40	0 <---> 300	0 <---> 15	0 <---> 500	0 <---> 125	0 <---> 100	





Depth correction

Zero WOB

Weatherford EDR receiving  
feed from cement unit

Begin CR @ 8062' MD