



Weatherford EDR Drill Log
 Depth Based Data
 Green Canyon 955 H-002



Legend

Drilling Data:
 BC bit condition
 BS bit size
 CB core bit
 CBR core bit re-run
 CR core
 CSG casing
 DC depth correction
 DIR directional survey
 DS deviation survey
 DST drill stem test
 LC lost circulation
 LCM lost circ material
 MM mud motor
 NB new bit
 PO pump output
 PP pump pressure
 RPM rotary speed
 RR re-run bit
 SPM pump strokes
 SPP stand pipe pressure
 TRQ torque
 TVD true vertical depth
 WLL wireline log
 WOB weight on bit

Mud Data:
 CL chlorides
 FC filter cake
 FV funnel viscosity
 LAT lagged after trip

Block: Green Canyon 955
RUE: OCS-G 30344
Well: H-002
Operator: University of Texas at Austin
Rig: Helix Q400
Type: Semi-Sub
Air gap: 52 ft
Water Depth: 6664 ft
Location: 27.000506N -90.426708W
Target: Methane Hydrate
Prognosed TD: 8440 ft

HoleData:
 9 7/8" Coring, ,

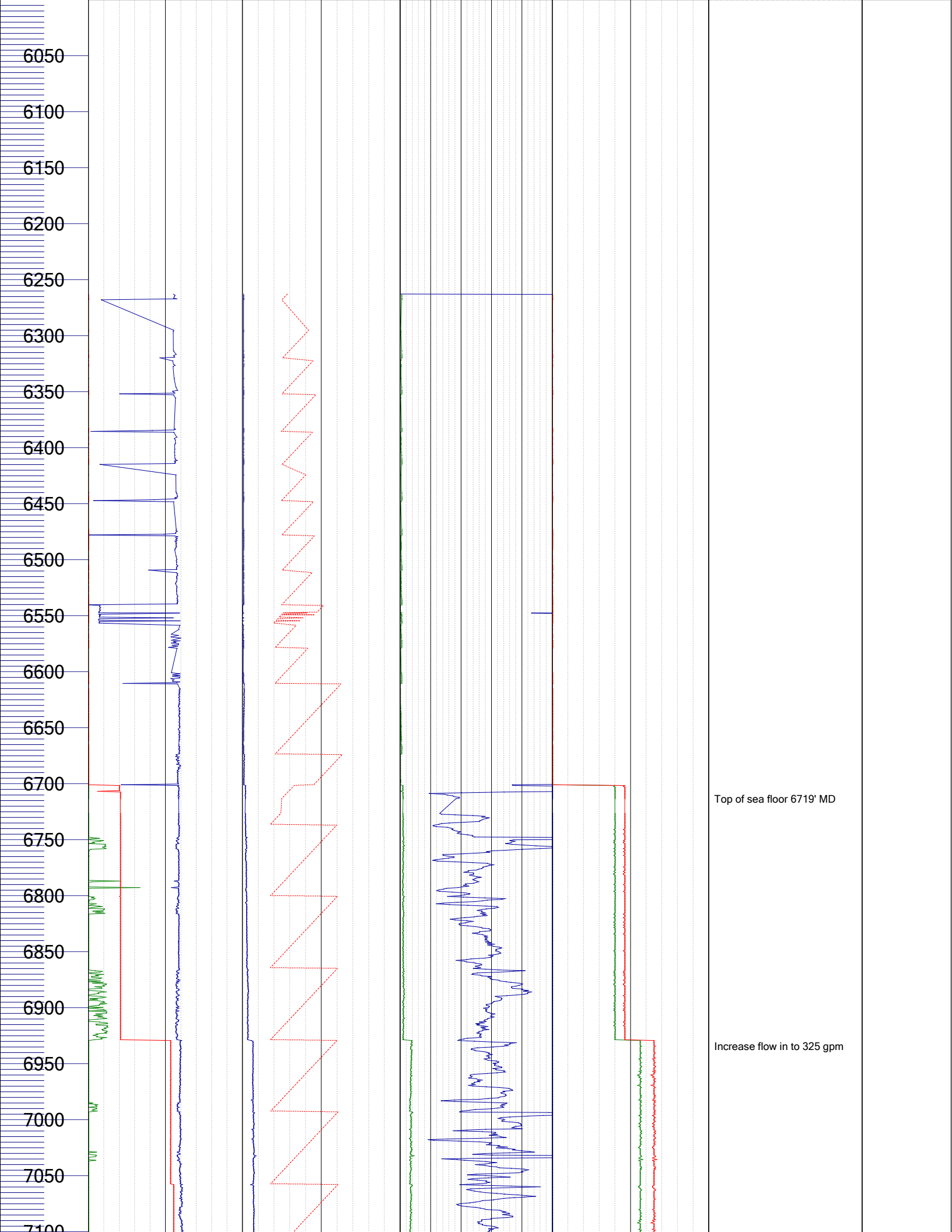
CasingData:
 N/A, N/A, N/A, N/A

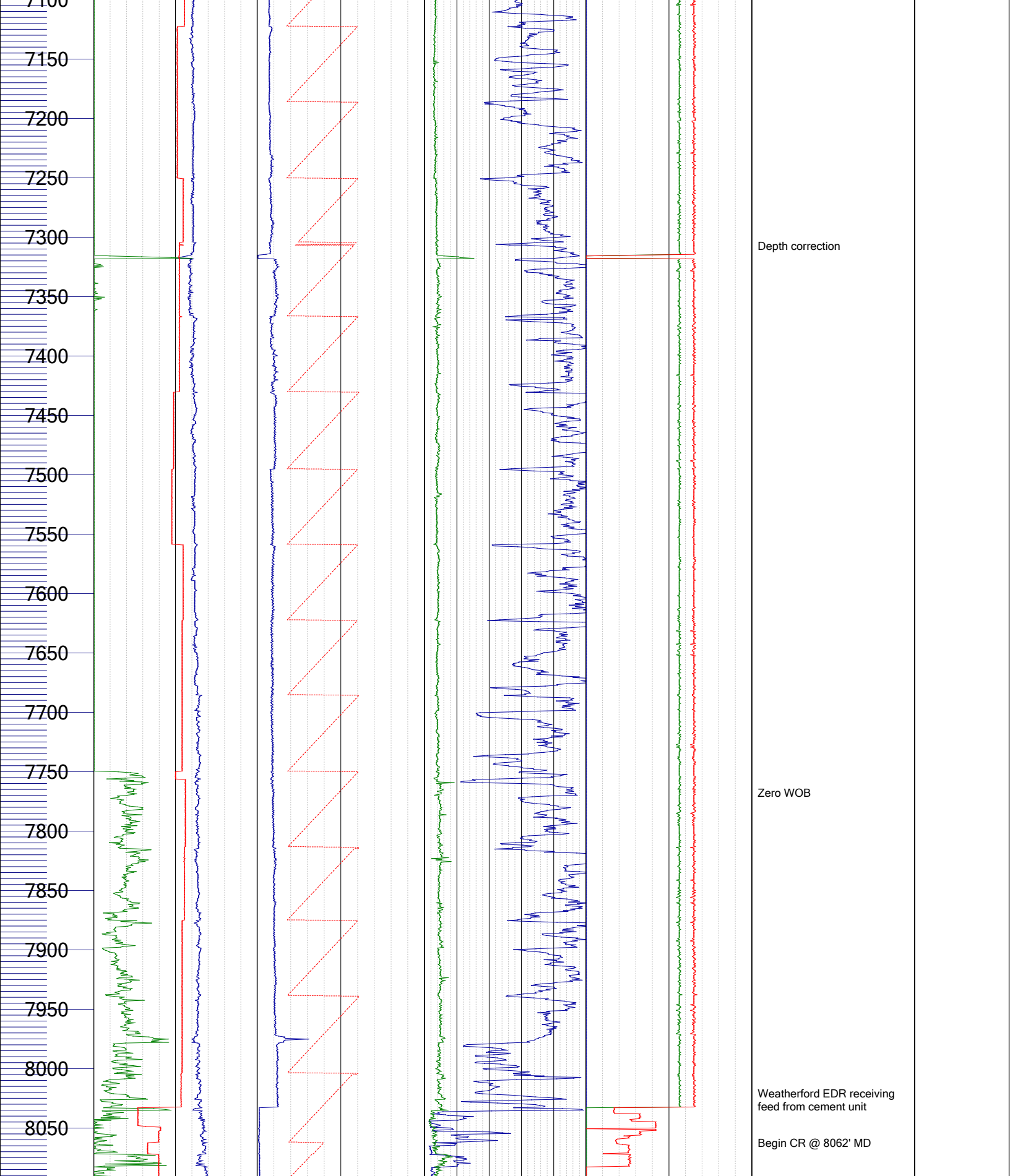
MudData:
 Water Base Mud

Notes:
 Top of sea floor 6719' MD
 Begin Coring @ 8062' MD

Personnel:
 Daniel Hanson

Depth	Hookload Klb	WOB Klb	Top Drive RPM	Hook Position ft	Standpipe Pressure psi	Torque KFLB	ROP Interval ft/hr	Mud Density In ppg	Flow In gal/min	SPM 2 min	SPM 1 min	Comment1
	0 <---> 300	0 <---> 40	0 <---> 150	0 <---> 150	0 <---> 1000	0 <---> 40	0 <---> 300	0 <---> 15	0 <---> 500	0 <---> 125	0 <---> 100	





7100
7150
7200
7250
7300
7350
7400
7450
7500
7550
7600
7650
7700
7750
7800
7850
7900
7950
8000
8050

Depth correction

Zero WOB

Weatherford EDR receiving
feed from cement unit

Begin CR @ 8062' MD