



Weatherford®

Weatherford EDR Drill Log
Time Based Data
Green Canyon 955 H-002



Weatherford®

Legend

Drilling Data:

- BC bit condition
- BS bit size
- CB core bit
- CBR core bit re-run
- CR core
- CSG casing
- DC depth correction
- DIR directional survey
- DS deviation survey
- DST drill stem test
- LC lost circulation
- LCM lost circ material
- MM mud motor
- NB new bit
- PO pump output
- PP pump pressure
- RPM rotary speed
- RR re-run bit
- SPM pump strokes
- SPP stand pipe pressure
- TRQ torque
- TVD true vertical depth
- WLL wireline log
- WOB weight on bit

Mud Data:

- CL chlorides
- FC filter cake
- FV funnel viscosity
- LAT lagged after trip

Block: Green Canyon 955
 RUE: OCS-G 30344
 Well: H-002
 Operator: University of Texas at Austin
 Rig: Helix Q400
 Type: Semi-Sub
 Air gap: 52 ft
 Water Depth: 6664 ft
 Location: 27.000506N -90.426708W
 Target: Methane Hydrate
 Prognosed TD: 8440 ft

Notes:

Top of sea floor 6719' MD

HoleData:

9 7/8" Coring, ,

CasingData:

N/A, N/A, N/A, N/A

MudData:

Water Base Mud

Personnel:

Daniel Hanson

Time

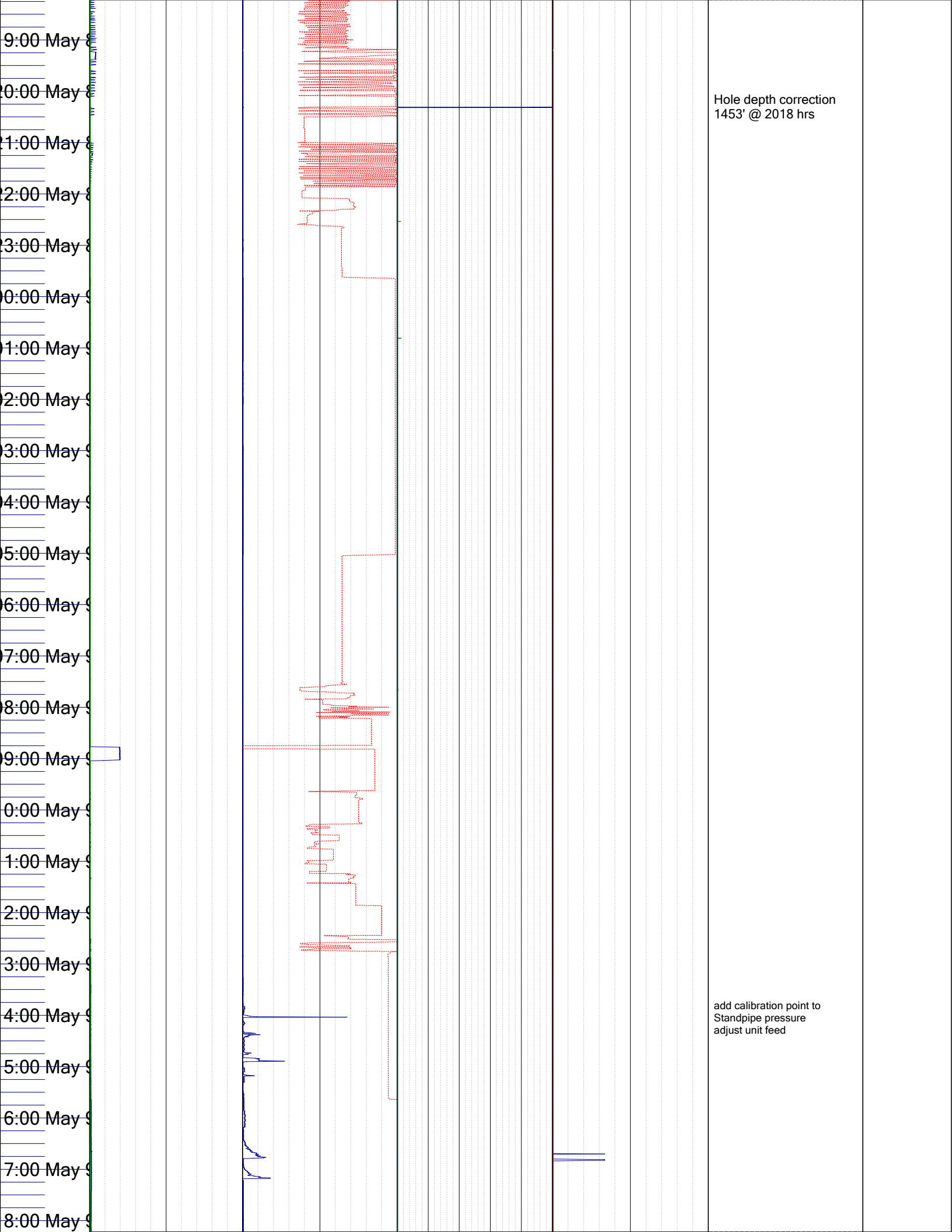
Comment1

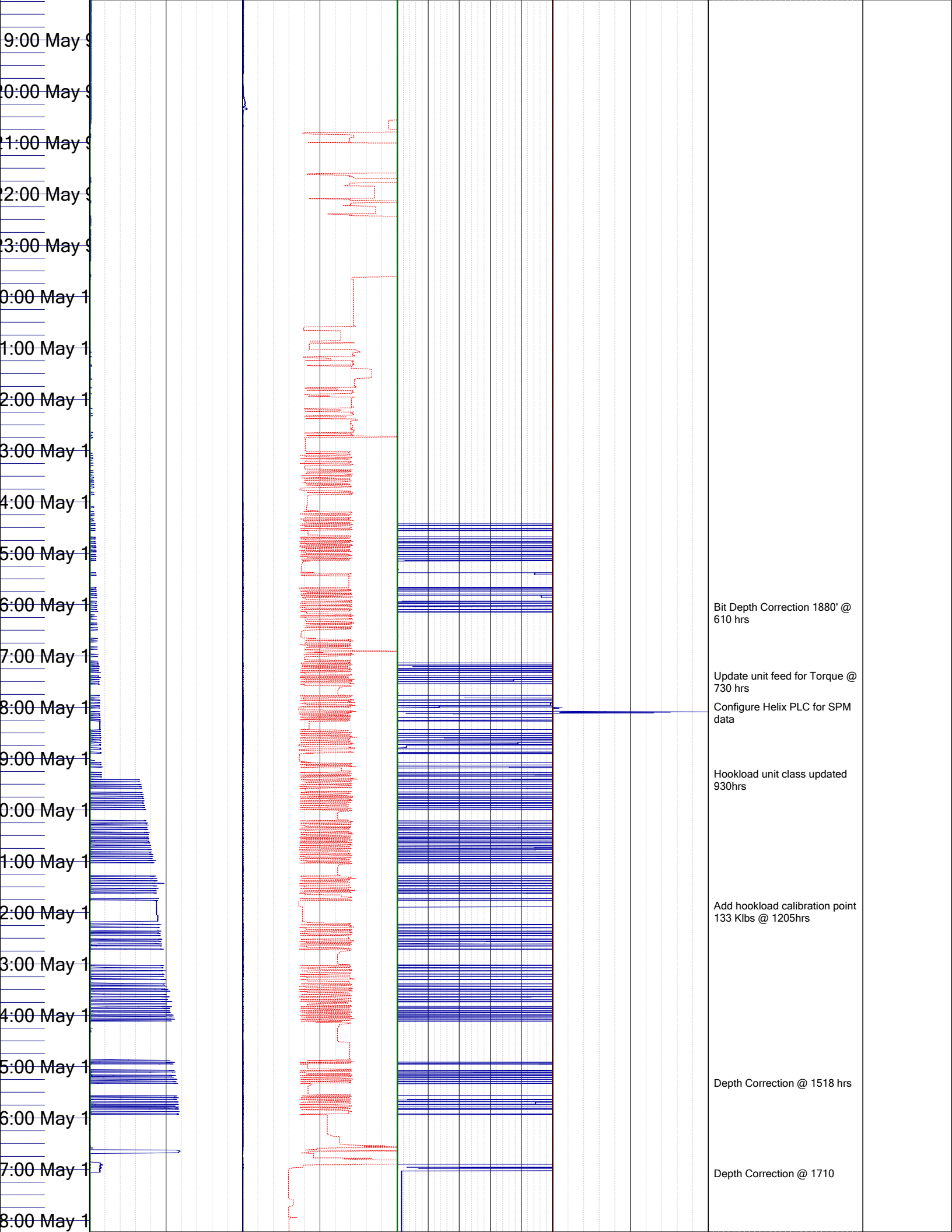
Hookload Klb 0 <--> 300
WOB Klb 0 <--> 40

Standpipe Pressure psi 0 <--> 10000
Hook Position ft 0 <--> 100

ROP Interval ft/hr 0 <--> 500
Torque KFLB 0 <--> 2220

SPM 1 min 0 <--> 150
SPM 2 min 0 <--> 150
Flow In gal/min 0 <--> 800





9:00 May 0

10:00 May 0

11:00 May 0

12:00 May 0

13:00 May 0

14:00 May 1

15:00 May 1

16:00 May 1

17:00 May 1

18:00 May 1

19:00 May 1

20:00 May 1

21:00 May 1

22:00 May 1

23:00 May 1

00:00 May 1

01:00 May 1

02:00 May 1

03:00 May 1

04:00 May 1

05:00 May 1

06:00 May 1

07:00 May 1

08:00 May 1

Bit Depth Correction 1880' @
610 hrs

Update unit feed for Torque @
730 hrs

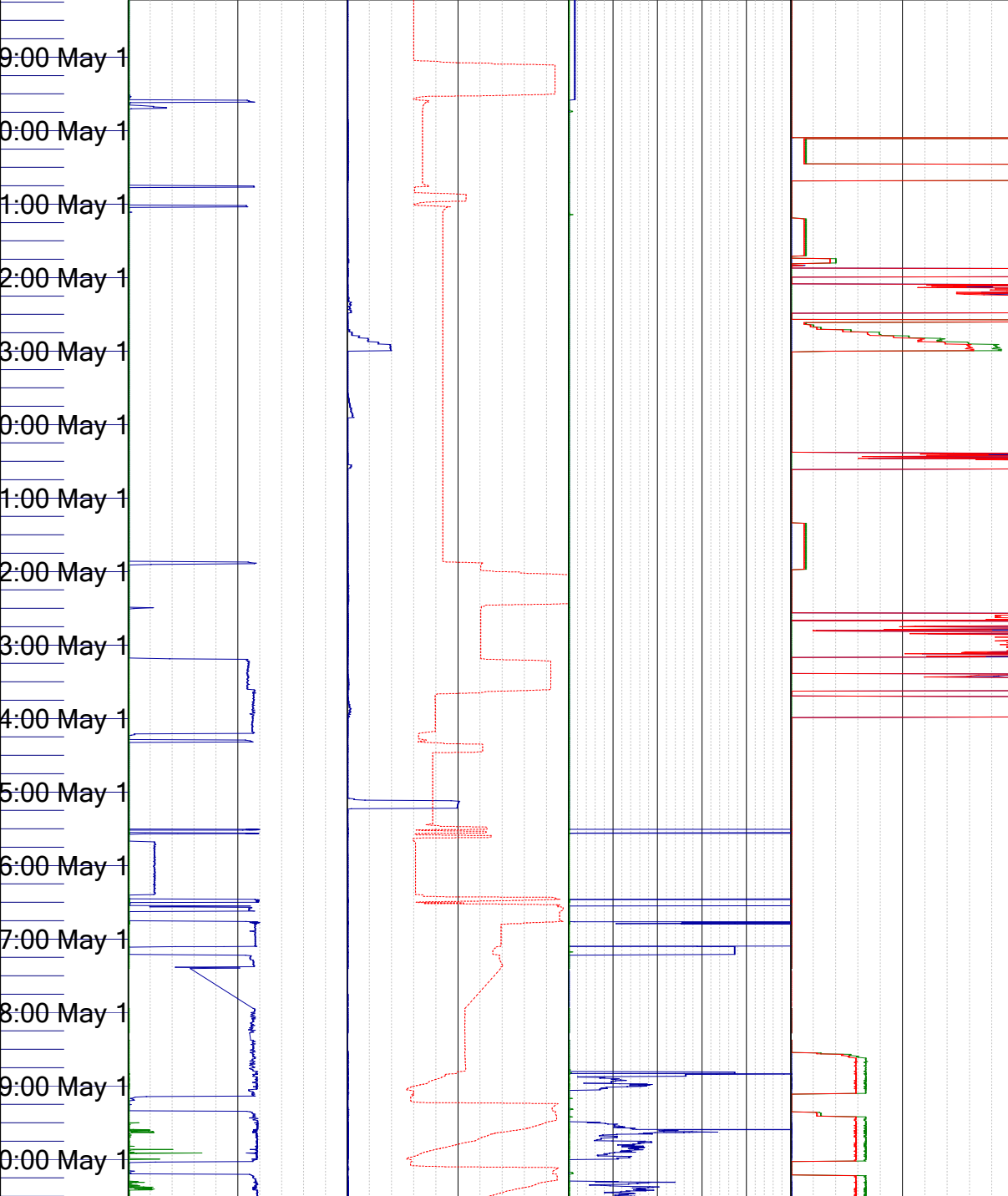
Configure Helix PLC for SPM
data

Hookload unit class updated
930hrs

Add hookload calibration point
133 Klbs @ 1205hrs

Depth Correction @ 1518 hrs

Depth Correction @ 1710



WEATHERFORD SERVER 3
MIN 4 SEC BEHIND UTC
TIME
Top of sea floor 6719' MD