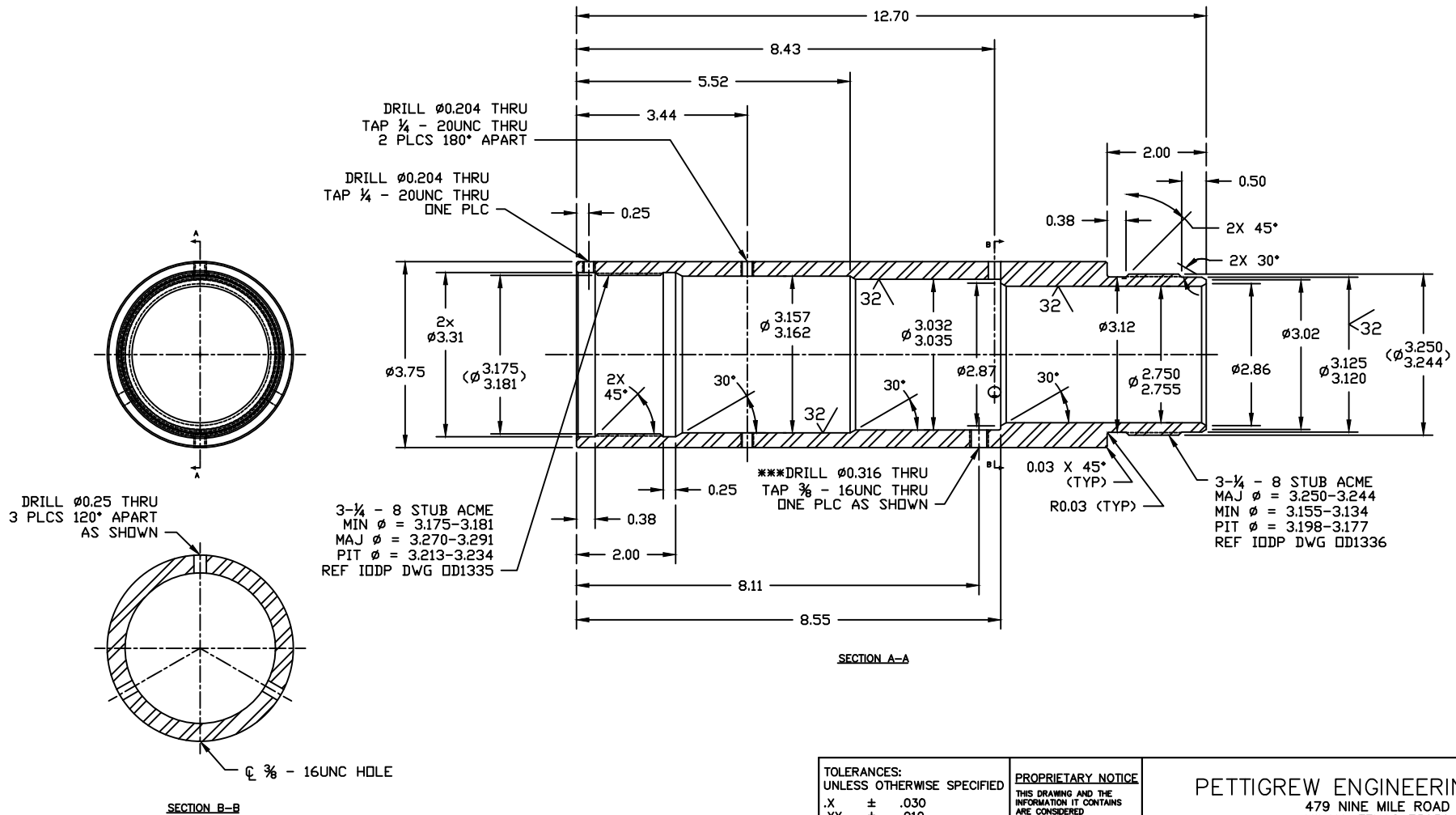


REVISIONS				
NO	DESCRIPTION	DATE	BY	APR/DATE
1	ADDED 3/8 - 16UNC HOLE	29Feb12	TP	TP/29Feb12



MATERIAL: 4130/4140
HEAT TREAT: N/A
SURF TREAT: PHOSPHATE COAT

TOLERANCES:
UNLESS OTHERWISE SPECIFIED
.X ± .030
.XX ± .010
.XXX ± .005
ANGLES ± .5°
BREAK EDGES .015 X 45° MIN
FINISH 125/

ALL DIMS ARE IN INCHES
UNLESS OTHERWISE NOTED.

PROPRIETARY NOTICE
THIS DRAWING AND THE
INFORMATION IT CONTAINS
ARE CONSIDERED
CONFIDENTIAL AND MAY NOT
BE REPRODUCED, COPIED OR
USED, IN PART OR IN WHOLE,
WITHOUT PRIOR WRITTEN
CONSENT.

SHEET
1 OF 1

SCALE
1:1

BY DATE
TomP 29Feb12

APPROVED
TP 29Feb12

CHECKED
TomP 29Feb12

SIZE
B

REV.
1

PETTIGREW ENGINEERING, PLLC
479 NINE MILE ROAD
MILAM, TEXAS 75959
Tel: +979-450-0422 Email: pettigrew.engineering@windstream.net

TITLE
SHEAR SCREW HOUSING

SYSTEM
MDHDS

ASSEMBLY
172969-200 LATCH ASSY